



VIGILATE

www.vigilatevision.com

V-SUITE

**A Complete Suite of Applications
for Security and Traffic
Management**





Manage all systems with the support of artificial intelligence



The advantages of using a Suite instead of single programs


v-SUITE is an effective and reliable tool in security and traffic management but also a sharing tool, a unique environment where traffic information can become useful for an anti-intrusion system, where diagnostic data can become an indicator security and where all the information generated can be consulted and analyzed together in order to make operational decisions.

Main features

- Manage all your installed security and traffic equipment in a single interface.
- Supervise your security systems.
- Supervise your customers' systems to offer new control, management or maintenance services.
- Centralize remote control (including CCTV) of your customers' systems to increase the quality of service.
- Web-cloud platform immediately available and interoperable for all police forces and for all operators accredited for integrated safety management. Possibility of offering data and images to other platforms (total scalability).

A complete platform of applications and tools to control and analyze your security and traffic systems

A complete range of applications dedicated to Security and Traffic professional management; business and consumer software to enable partners in the sector to better manage and control its products and provide new services to its customers.



General utilities

- Console**
Management of users, rights, licenses, and assets
- Analytics**
Desktop dashboards and data reports with graphs and tables
- Diagnostic**
Diagnostic data dashboard of installed enabled devices
- Automation**
Automation generator for various types of events
- Configurator**
Remote configuration of connected devices enabled for the service



Security management and access control

Xentinel

Security system manager



Traffic management and road security

ITS Manager

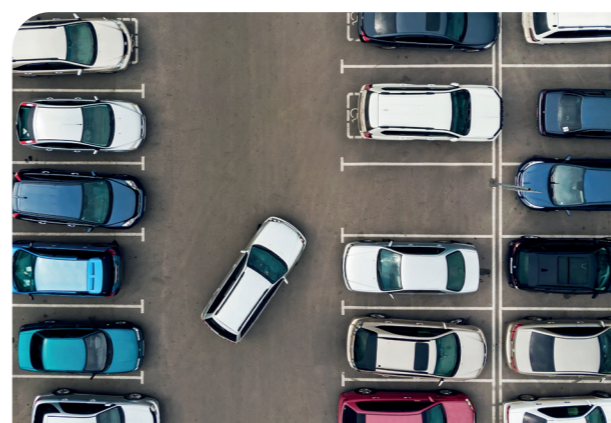
Professional traffic information manager

Xscanner

Road security with searches and list management

Tolling Manager

Professional road section management software



Professional road section management software

Logipark

Free parking manager

Logiweight

Logistical control of vehicles for check-in, loading, unloading and checkout operations



B2B services

Multimanager

Remote manager of non-proprietary v-SUITE platforms

Xentinel Operation Center

Remote supervision of non-owned video surveillance systems



Who is it aimed at?



Private security

- Companies
- Industries
- Housing complexes
- Banks
- Retail
- Franchising



Public security

- Airports
- Railway facilities
- Border controls
- Military bases
- National security
- Check points
- Private surveillance
- Law enforcement



Integration partners

- Software house
- Data analysis centers
- Integration with third-party platforms



ITS systems

- National traffic controls
- Border controls Tolls
- Parking
- Access controls
- Free-flow systems
- Intelligent road systems
- Local police and law enforcement agencies

Features

Multifunction

- Sanctions Territorial control Investigation
- Statistical

Multouser

- Local police
- Local administrators
- Technical offices
- Provincial structures
- Regional structures
- Ministries
- Police

Interconnected

- Ania
- SCNTT
- ENIT
- Ministry of Transport

Big data ready

- Mongo DB
- SQL
- SQL Server
- Excel
- Oracle
- Xml

Certified safety

- ISO/IEC 27001:2022
- ISO/IEC 27017:2015
- ISO/IEC 27018:2019
- Accredited
- UNI CEI EN 50518 compliant
- GDPR compliant
- ACN Market Place compliant

Integrated and integrable

- Kireti
- centrax-SM
- Avigilon
- Milestone
- Openware
- Omnia



General architecture, from field to platform



How we speed up your business.

Endless possibilities starting from a suite of applications for security, traffic and IoT with a technological partner always at your side

Certainty of scalability of data and systems a strong and consolidated structure over time that allows it to manage very large systems

security and certifications to be compatible with the most advanced standards

No worries in the integration of a multitude of field devices thanks to our multi-protocol distributed intelligence

General architecture, from field to platform



4

Swagger API Development .NET Core

Microservices API - Rest

Integration and sharing, this is the goal of V-SUITE, to obtain information from the field and make it available to its customers on multiple levels of use, both for those who require a turnkey product and who find greater benefit in directly using Vigilate's vertical software or integrating their software to our M2M backend.

Third party applications

3

Software Apps

A complete line of software applications dedicated to the traffic and security market, a dynamic and scalable software structure for every needs, constantly evolving based on changing technologies and market demands. For the most advanced System Integrators, a market space to develop their own applications.

Supervised applications

v-SUITE

Data

mongoDB Database per BIG Data

Microsoft SQL Server Standard data management

Media Video Server

Profiling and authentication



1

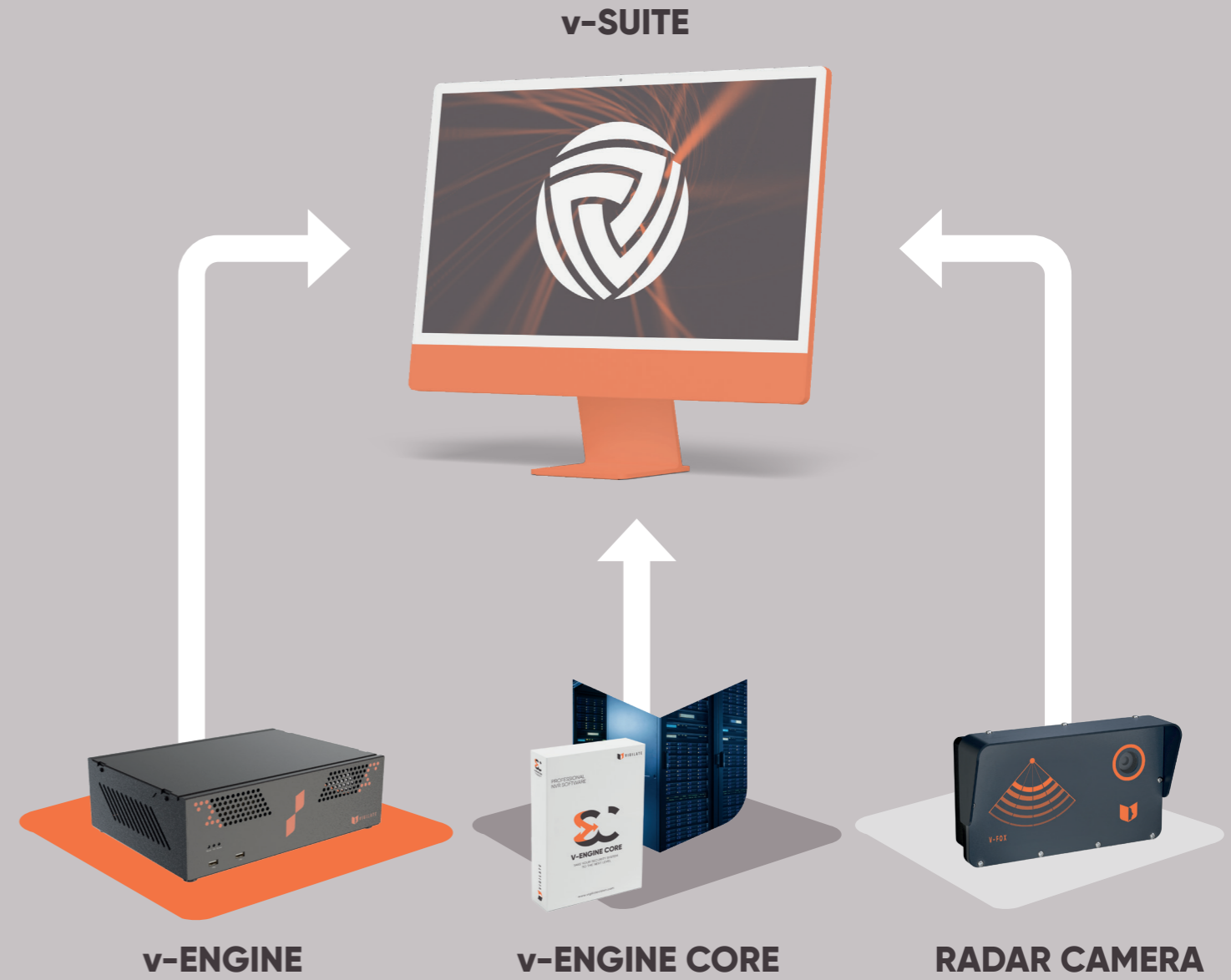
Field device architecture for security and traffic systems

v-SUITE directly supports the entire range of Vigilate products including: v-ENGINE and v-ENGINE CORE intelligent NVR line, the complete range of license plate reading products, the latest generation Radar/Camera devices. Through the v-ENGINE and v-ENGINE Core integration software, a lot of devices from other vendors can be connected to v-SUITE. The most advanced system integrators can integrate additional devices by relying directly on the API-REST calls that Vigilate offers to external developers.



Field device architecture for **security** systems

Compatible with the major market manufacturers via specific drivers.
Connect to www.vigilatevision.com and download the list of compatible devices from the Download area



Integrate third-party systems

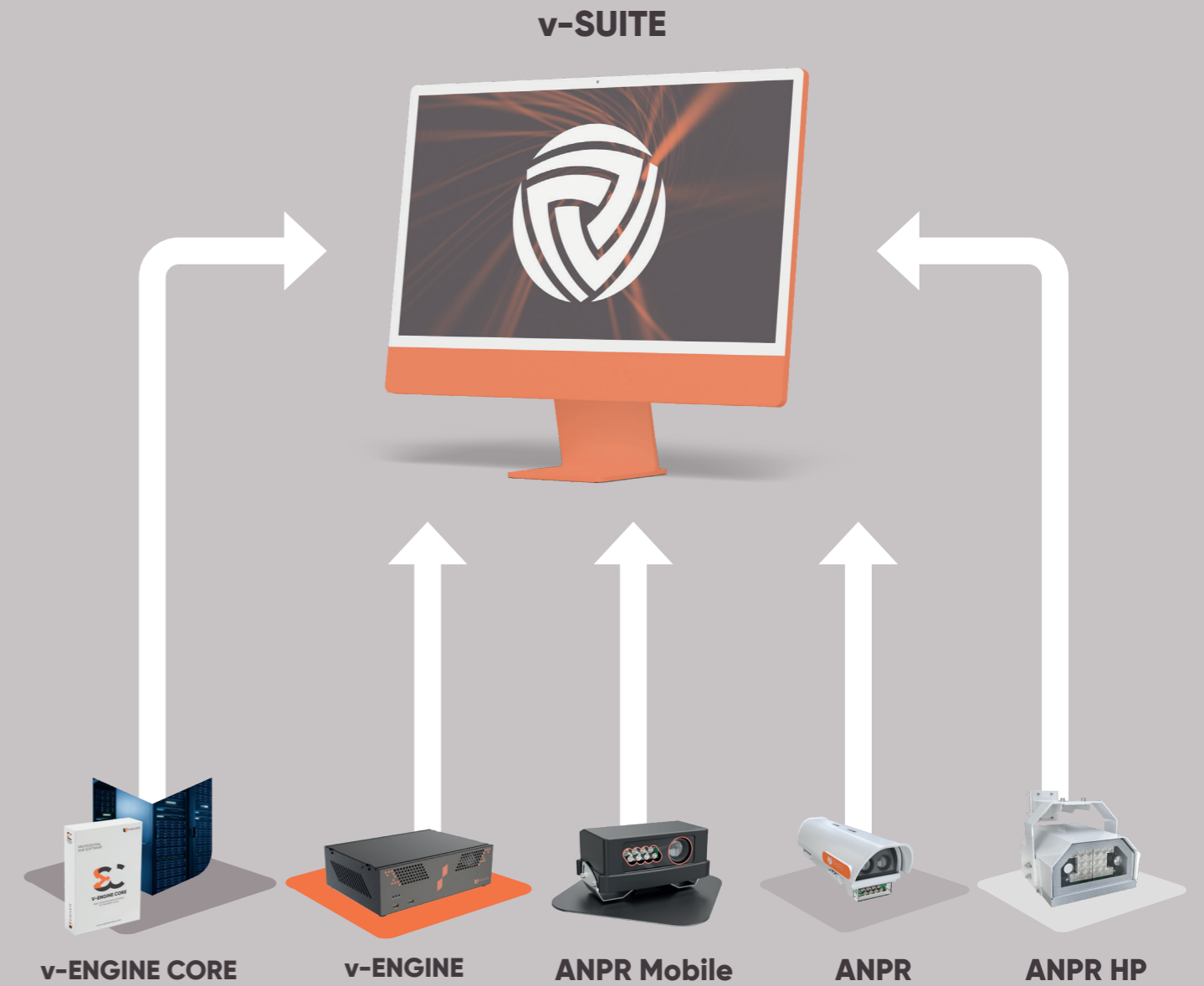
								
								
Sensors	Thermal chambers	Perimeter controls	Analogue cameras	Onvif IP cameras	Fire control panels	Access control	Alarm control units	Anti drone

All trademarks belong to their respective owners, third-party trademarks, logos, product names, trade names, corporate and company names mentioned are trademarks owned by their respective owners or registered trademarks of other companies and have been used for explanatory purposes only, without any intent to violate the Copyright rights.



Field device architecture for **traffic** systems

Total integration of the field allows cross-technological control dynamics for complete and high-performance supervision.



Integrate third-party systems

- CCTV cameras for remote AID analysis**
- Radar and Lidar**
- Trigger**
- Gate bars**
- Parking meter**
- Signage**

All trademarks belong to their respective owners; third-party trademarks, logos, product names, trade names, corporate and company names mentioned are trademarks owned by their respective owners or registered trademarks of other companies and have been used for explanatory purposes only, without any intent to violate the Copyright rights.



2

iPaaS framework v-SUITE

v-SUITE is equipped with a very solid backend architecture, the result of years of experience. The continuous analysis and research of increasingly high-performance systems has led us to the creation of a strong base on which to rest latest generation applications. The large amount of data to be archived and analyzed has made us choose increasingly cutting-edge database technologies, relational and otherwise, currently adopted even by the most prestigious and widespread social networks.

Communication towards the field and applications



Interfacing field protocols



Microservices API - Rest

Profiling and authentication

v-SUITE is composed by numerous applications and features that obviously cannot be at the mercy of every user; therefore it was necessary to develop an advanced profiling and authentication system and in full compliance with security and privacy regulations, single sign on.

Big Data with Mongo DB

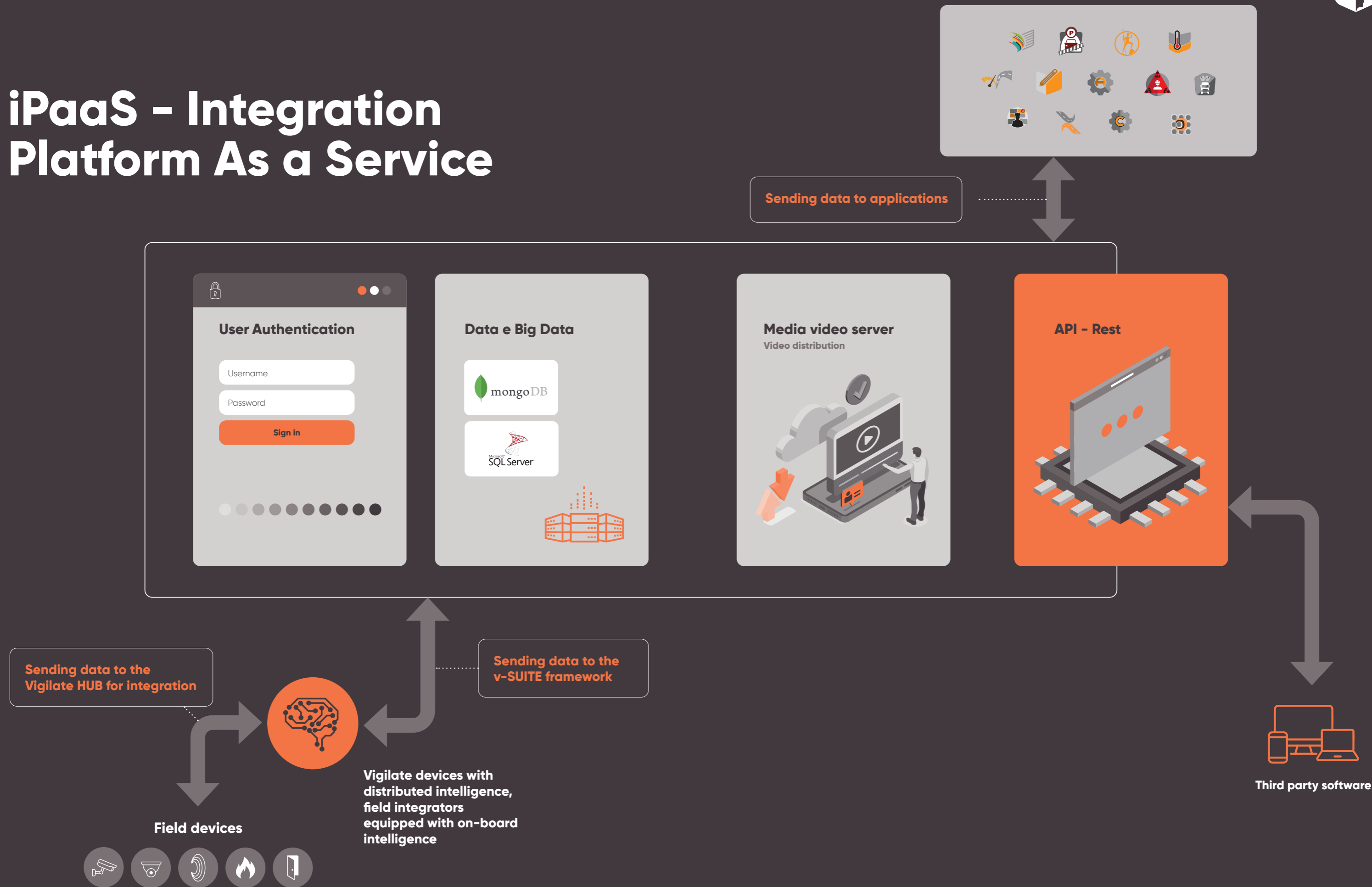
The large amount of data acquired by field devices cannot be managed except with advanced database systems. Access and processing times are certainly vital in the management of BIG DATA and for this reason Vigilante has decided to implement a technological approach that has no data management limits with the use of non-relational databases.

Fast video distribution

There is no security without video control and there is no efficiency without a rapid and controlled system for viewing and immediately sharing videos. To this end, the v-SUITE framework hosts a dedicated video media server that allows rapid viewing of videos and images.



iPaaS - Integration Platform As a Service





3

Software Applications

v-SUITE modules



CONSOLE

The v-Suite Administration console, managing those settings common to all applications such as user and license rights management and system logs.

AUTOMATION

The software allowing the creation of automatic processes when pre-determined events occur. A graphical editor allows drawing a flowchart describing events and the automatic actions to be performed.

CONFIGURATOR

The installation and configuration phases are always the most delicate. Vigilante offers a universal tool to remotely configure the products installed in the field. v-Configurator is the ideal tool to remotely configure and maintain the settings of device fleets quickly and safely.

ANALYTICS

Data processing software that analyzes data coming from both the safety and traffic sub-systems connected to the v-SUITE. The reports are available in graphical and tabular form. Data can be exported to third-party applications in various formats. This service is mainly aimed at the strategic decision-makers who need a clear and detailed vision of the operational scenarios.

DIAGNOSTICS

A panel to supervise the operating status of the installed machine park. The v-Diagnostics service constantly informs about the correct device operations and promptly reacts in case of anomalies.

MULTIMANAGER

v-SUITE offers to those who manage distributed architectures, a tool to remotely manage other v-Suite platforms. This feature is very useful for effectively and promptly manage and support own and customers' v-SUITE installations.

XWALL

Vigilate's smart video wall is automatic, predictive, intelligent and ideal for small, medium and large control centers.

Security

XENTINEL

The integrated security software, modern, scalable, cloud, able to manage homogeneously and easily the devices and systems that make up the modern security infrastructures such as video surveillance, anti-intrusion systems, access control, fire protection systems, etc ...

LOGIWEIGHT

The v-SUITE logistics module for managing loading and unloading of goods: access control of heavy vehicles and the integration of dynamic and static weighbridges.

SECURITY OPERATION CENTER

The v-Suite Control Room module for professional remote security management. Ideal for security institutions and large monitoring stations.

Traffic

SCANNER

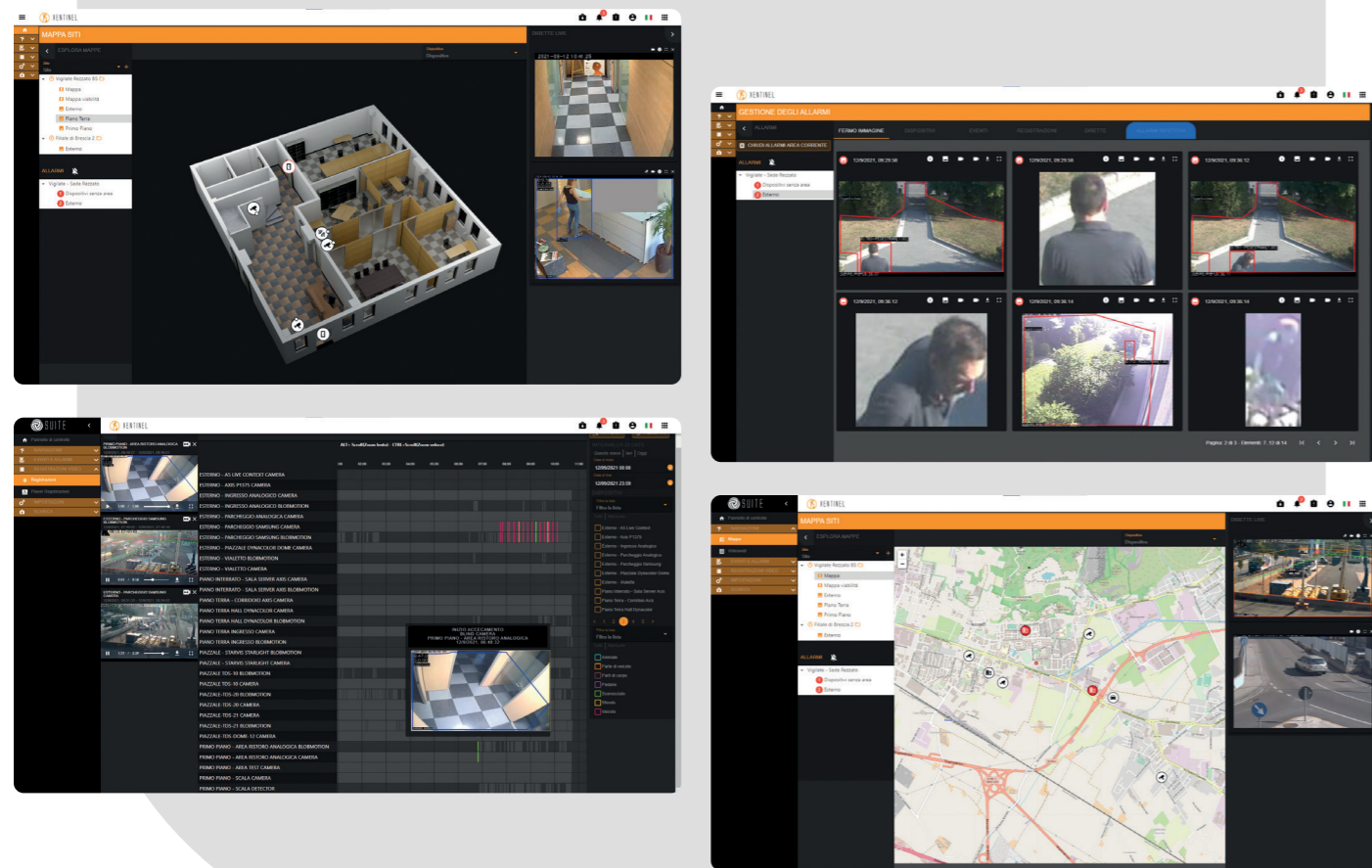
The software for the management and supervision of traffic systems: a complete and effective tool for monitoring urban, extra-urban, and Smart Cities' road infrastructures.

ITS MANAGER

The software module for traffic management of large road infrastructures such as motorways, major communication routes, Smart Roads and Smart Cities.

LOGIPARK

The free parking lots management and supervision module. Among its features are: vehicle access control, access rights, calendars, parking times supervision and much more.



Main features

- Nested and geographic bitmap maps management
- Multiple sites management
- Graphical layout of all devices with coverage area
- Graphical display of the hardware status of the system with reporting of any anomalies
- User permissions management
- Graphical alarm management
- Visualization and historical search of events/alarms
- CCTV: live viewing of IP or analog cameras
- CCTV: Historical video viewing, remote playback
- CCTV: Download recording portions in standard video format (H264)
- CCTV: Video wall module with various formats
- CCTV: pan, tilt, zoom, preset, and tour management for dome cameras
- CCTV: definition and execution of virtual patrol operations
- XWall client module for local PC for simultaneous opening of a large number of video streams (fixed guardian)
- Anti-intrusion: real-time sensor status
- Anti-intrusion: enabling and disabling areas
- Anti-intrusion: automatic and manual exclusion of non working sensors
- Anti-intrusion: calendar management for automatic activation/deactivation
- Anti-intrusion: alarm management with online management procedures
- Anti-intrusion: definition of logic to be applied in case of alarm (output activation, video recording start, etc.)
- Access control: the real-time display of the status of the gates
- Access control: logging of transits and possible generation of alarms
- Automation: remote control of I/O and external peripherals
- Integrated management of security products of the Vigilate range
- Real-time notifications of alarm, warning, info, and log
- Email notifications about alarms and system diagnostics
- Optional: Alarm management workflow procedure

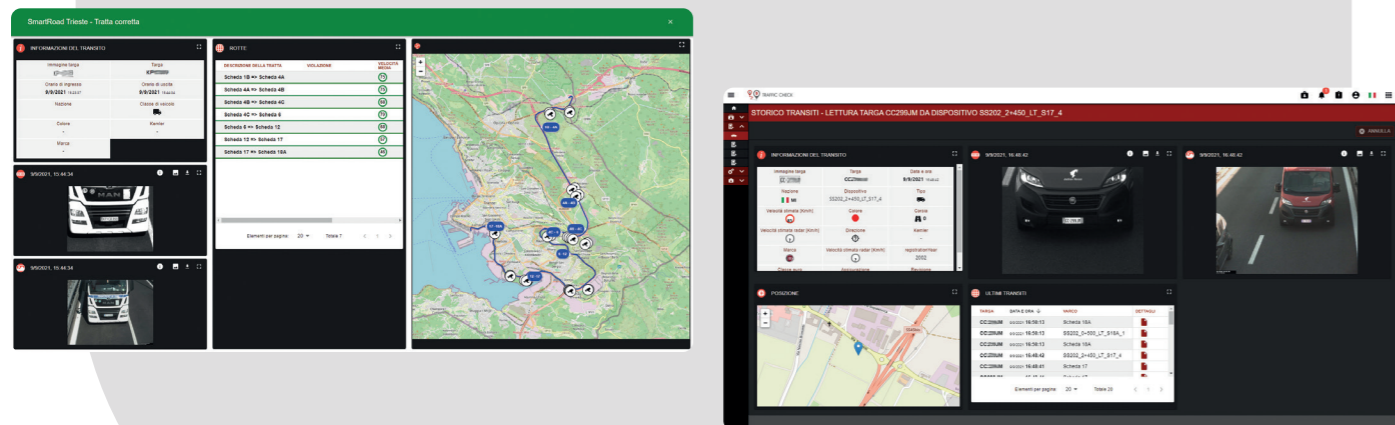


Xentinel

The application for managing security systems

Xentinel is the v-SUITE module used for integrated, modern, scalable security, capable of managing in a simple and homogeneous way the devices and systems that make up modern security infrastructures such as: video surveillance, access control, anti-intrusion systems, fire prevention systems.

Xentinel is the professional application for the supervision and control (also in the Cloud) of your Vigilate security system. Access the supervision system remotely, activate and deactivate your system, check what is happening by navigating in each area of your room, consult videos and signals from the installed devices.



ITS Manager

Professional management and control of traffic flows

The ITS manager software module was created for the management of traffic of large road infrastructures such as motorways, major communication routes, Smart Roads, Smart City.

The application allows the management and supervision of traffic systems with heterogeneous sensors such as radar, laser, multi-technology sensors, loop sensors, cameras with AID algorithms installed on board, intelligent NVRs equipped with software for counting and controlling the traffic, license plate

Main features

- Setting routes
- Map management
- Gate management
- Route management
- Travel times,
- Counts by road segment,
- Forecast on a time basis,
- Statistics,
- Prediction of events,
- Temporal O/D matrices,
- O/D for counting,
- Calculation of average traffic speeds,
- Totals per lane,
- Totals by vehicle type,
- Detection of vehicles with particular average mileages,
- Calculation of risk on a road section and much more

reading systems. ITS Manager is able to correlate field sensor data in order to monitor and view traffic status, generate alarms relating to anomalous situations, generate forecasts on a statistical basis, on events, etc. This application allows you to check the consistency of travel times of vehicles in transit on pre-established road sections, is able to detect traffic blocking situations in real time, and is able to predict the formation of congestion situations or traffic slowdowns.

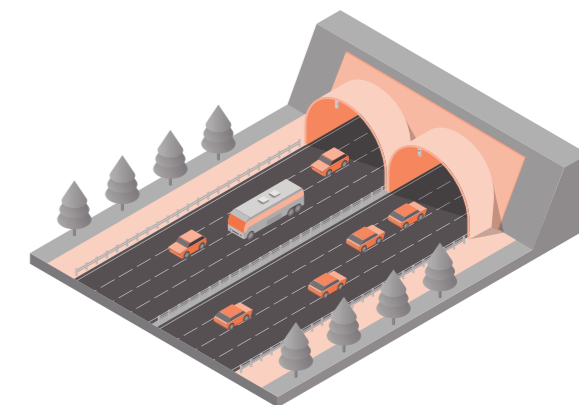
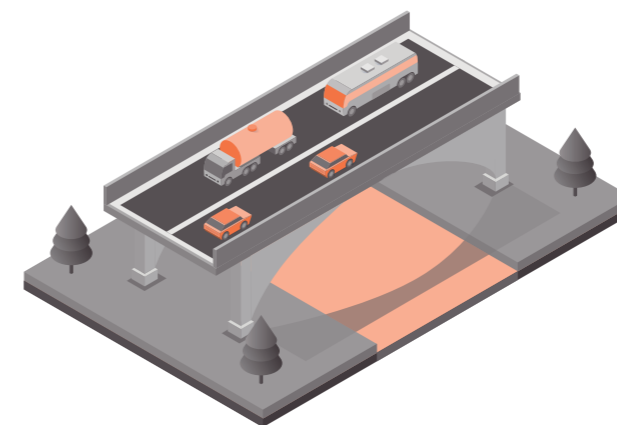
Dynamic risk on the road section

The software is equipped with additional modules capable of expressing, in real time, generic risk indices associated with road sections between two license plate reading gates.

Suitable for the surveillance of particular and particularly dangerous infrastructures such as large bridges, tunnels, important road junctions, port junctions, airport junctions, etc., it allows you to report anomalies relating to suspicious travel times of individual vehicles compared to the average traffic speed. In this way it is possible to carry out control stops on individual marked vehicles where the probability of possible suspicious or criminal situations taking place along the monitored sections is greater. The risks are related to the presence of dangerous goods on the road or to the presence of particular

vehicles such as exceptional transports, passenger vehicles such as coaches and buses, traffic density, traffic speed and many other factors.

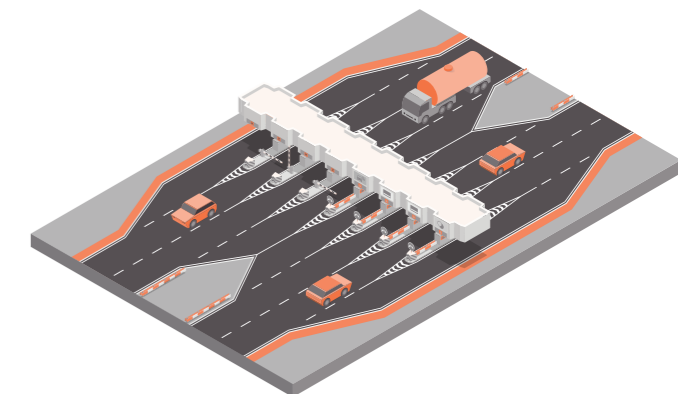
Another factor considered by the calculation algorithm is the average speed of traffic, slowdowns, possible queues and everything is naturally related to the characteristics of the road section such as length, permitted speed, single or double direction etc. The module works combined with the installation of at least two surveillance number plate reading cameras, located at the entrance and exit of the section. In order to improve the performance of the module, it can also work with additional license plate reading cameras along the stretch or integrate surveillance cameras with AID software loaded on board.

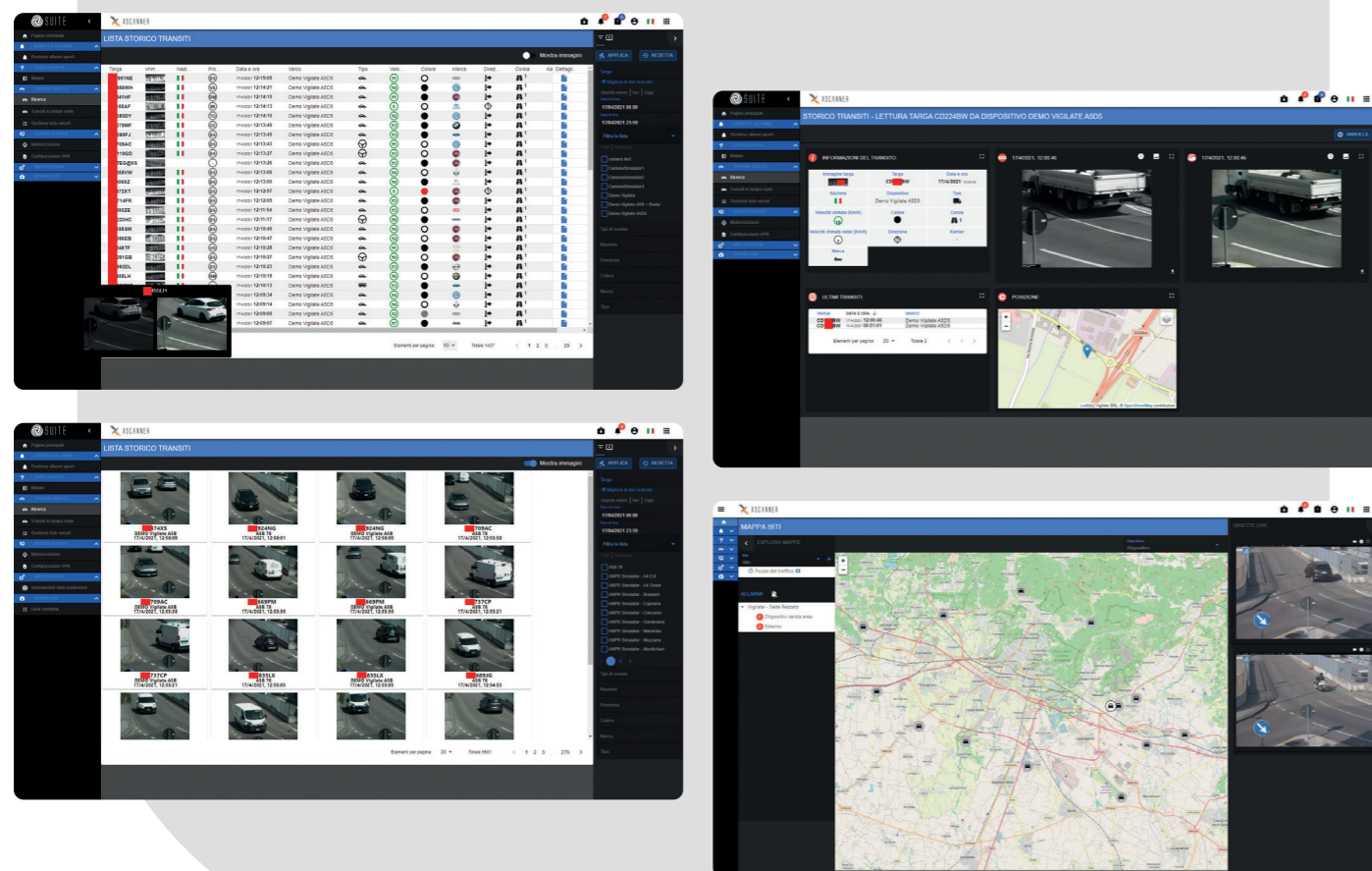


Traffic Tolling Manager

The Tolling Match Manager software module was created for the advanced reconciliation of transits entering and exiting a toll road circuit with free-flow technological infrastructure (without toll booths). The application is designed for maximizing the reconciliation of vehicle transits based on license plate reading, the presence of any OBUs, expected average travel times, and vehicle characteristics. TTM generates an output compatible with the payment methods of electronic circuits and according to the relevant regulatory standards.

The module is dedicated to the management of tolling systems based on video-tolling technology. O/D matrices with software multi-level reconciliation, including OBU interfacing module for integration/completion with SET tolling systems.





Search for license plates and dangerous goods Management of vehicle lists and alarms Verification of license plates with vehicle public registry database

Features

- Store images and transit data from license plate reading equipment.
- Stores any context images associated with transits.
- It searches for vehicles by the license plate number even if incomplete.
- View all the details related to OCR images, context images, and transit data of the license plates you are looking for.
- Search for a vehicle by type (mopeds, motorcycles, cars, trucks without trailers, trucks with trailers).
- It manages lists or groups of lists of vehicles associated with alarm and signaling via SMS and email.
- Search for a vehicle by ADR code(Kemler)related to heavy goods transporting dangerous goods (explosive, corrosive, particularly polluting to the environment, radioactive)
- Search by type of ADR code.
- Manages alarm events when passing vehicles with ADR code or a specific category of ADR code
- Report wanted vehicles by SMS or e-mail message.
- Management of AID(Automatic Incident Detection) control systems with the possibility of dealing with alarms related to slowed traffic, queue, vehicle against hand, stationary vehicle, pedestrian on the road, pressure drops, smoke-fog.
- Management of statistical data aid systems with the production of reports on the number of vehicles in the on-site per lane, classification of vehicles per lane, the average distance between vehicles, average traffic speed, etc



Xscanner

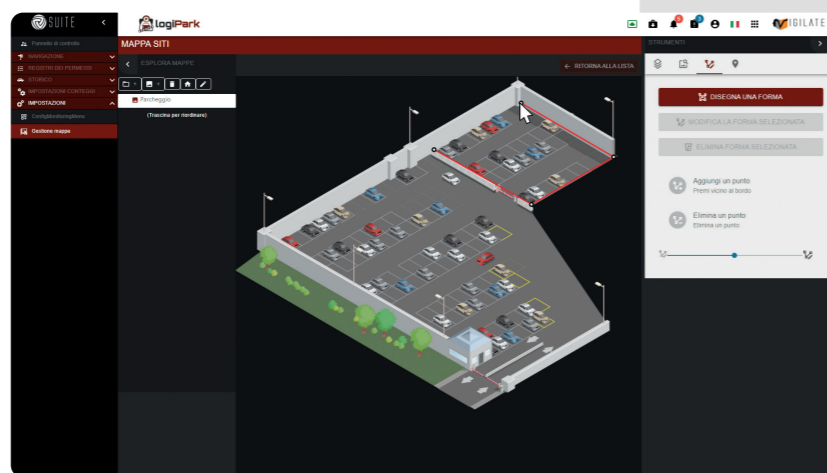
v-SUITE module for the management and supervision of traffic systems: a complete and effective tool for monitoring urban, extra-urban and Smart Cities road infrastructures.

Xscanner is a software application, simple and intuitive, it is dedicated to the management of license plate reading cameras or AID from which it collects data relating to vehicle transits, centralizing information in a single environment. Conveying all the information in a single point

allows Xscanner to perform complex analysis and data research to make strategic decisions in the management of city roads, speed up investigation actions and consequently increase public security.

SCNTT

The integration module with SCNTT allows the XScanner platform software to interoperate with the State Police server in order to detect transits of cars stolen or monitored by the Police Force.



Logipark

The software is dedicated to the management and supervision of non-paid car parks.

Logipark is designed for the integrated management of non-paid parking with barrier entrance. Useful for companies, hospitals, hotels, car parks, ports, the logistics companies that have to manage their own internal parking areas without payment directly but according to clear and controlled criteria access. Logipark can be integrated into systems existing parking spaces to provide additional information useful for statistical and security purposes, it allows you to manage subscription access rights, titles,

temporary permits, employee rights, associations of multiple vehicles per individual and many other criteria necessary to automate and control effectively authorized access to areas of assigned parking. The simple but extremely scalable architecture with which it was designed allows in any implementation of new features and interfacing with new devices to create new access rules and actions.

Features

- Georeferenced cartographic map (Google Maps, Open Street Map or image), which allows quick management of the parking lots scattered throughout the territory with information of the location of the parking lots and the number of free/occupied spaces
- Configurable real-time login display page per user.
- Real-time display of the occupancy status of each parking lot.
- The system is protected by authentication with different levels of authorization.
- Advanced transit search and export capabilities in different formats.
- Calculation of the time of stay of vehicles in the parking lot with the possibility of exporting them to payment/billing systems.

- Permission management
- Parking management
- Statistics
- Door configuration
- Counts
- Attention thresholds



Logiweight

Vehicle logistics control for check-in, loading, unloading and checkout operations

Logiweight is used to control and manage the loading/unloading processes of arriving and departing vehicles exit from the company. The integration between vehicle and trailer license plate numbers with the weight allows complete control for both purposes of service quality and internal security. The information acquired is aggregated and analyzed

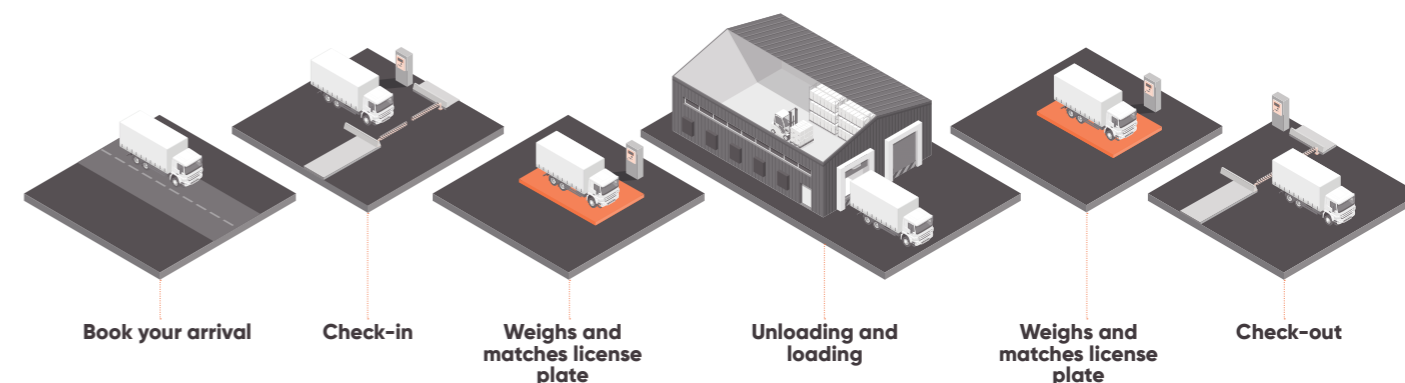
based on configurable rules that produce a series of results such as weight control and loading/unloading bay management. Based on the results obtained, a series of actions can be undertaken: sending emails, sending text messages and Telegrams, opening bars and gates, publishing messages on variable messaging panels, alerting the operator and many others.

Main features

- Management of the arrival of the vehicle
- Procedures for accessing the loading/unloading bay
- License plate weight association
- Interfacing with internal management systems
- Check in and check out procedures

Customizzazione

Logiweight finds its potential in integration with the devices and systems supplied to the company where it is installed, therefore, a phase is necessary for customization and integration of the product that varies from company to company.





CLIENTE	CONNESSO	ORARIO DATA	ALLARMI ATTIVI	ALLARMI TECNICI ATTIVI	GESTIONE ALLARMI
Centro Commercial (Grosseto)	✓	10/03/2017 14:32:57			GESTIONE ALLARMI
Conad	✓	10/03/2017 14:32:57			GESTIONE ALLARMI
Sansepolcro	✓	10/03/2017 14:32:57	1		GESTIONE ALLARMI
Dunlop	✓	10/03/2017 14:32:57	2		GESTIONE ALLARMI
FISMA	✓	10/03/2017 14:32:57			GESTIONE ALLARMI
Fimonda	✓	10/03/2017 14:32:57			GESTIONE ALLARMI
OLA (PIRELLA) CDC. Poggio. N.	✓	10/03/2017 14:32:57			GESTIONE ALLARMI
OLA BRESCHIA SERVICE	✓	10/03/2017 14:32:57			GESTIONE ALLARMI
OLA ENTERPRISE CESENA	✓	10/03/2017 14:32:57			GESTIONE ALLARMI
OLA ENTERPRISE POMEZIA	✓	10/03/2017 14:32:57		2	GESTIONE ALLARMI
OLA LATINA	✓	10/03/2017 14:32:57			GESTIONE ALLARMI
OLA LECCE	✓	10/03/2017 14:32:57			GESTIONE ALLARMI
OLA PERCARA	✓	10/03/2017 14:32:57			GESTIONE ALLARMI
OLA SARANTO	✓	10/03/2017 14:32:57			GESTIONE ALLARMI
OLA SUD	✓	10/03/2017 14:32:57			GESTIONE ALLARMI
Libertaria Giancarlo	✓	10/03/2017 14:32:57			GESTIONE ALLARMI
Lombardia	✓	10/03/2017 14:32:57			GESTIONE ALLARMI
LAN	✓	10/03/2017 14:32:57			DEFINIZIONE ALLARMI

Multimanager

Quick access to your customers' v-SUITES for systems support, configuration and maintenance.

It often happens that its customers need help to configure or manage their system through their v-SUITE installation. Multimanager is focused to allow the System integrator to offer services to its customers, through an authorization and authentication procedure.

The end customer, through his v-SUITE, authorizes his supplier to operate (with pre-established credentials) on his system in order to speed up relationships and support interventions.

v-SUITE authentication and twinning

Remote management

Customer supervision control panel

Customer status list

List of connection requests to customers



Xentinel Operation Center

Tools for aggregate system data of the customers to manage centralized security

Ideal for security institutions or large control rooms operational. Professional remote security management, interventions video verification and alarm management.

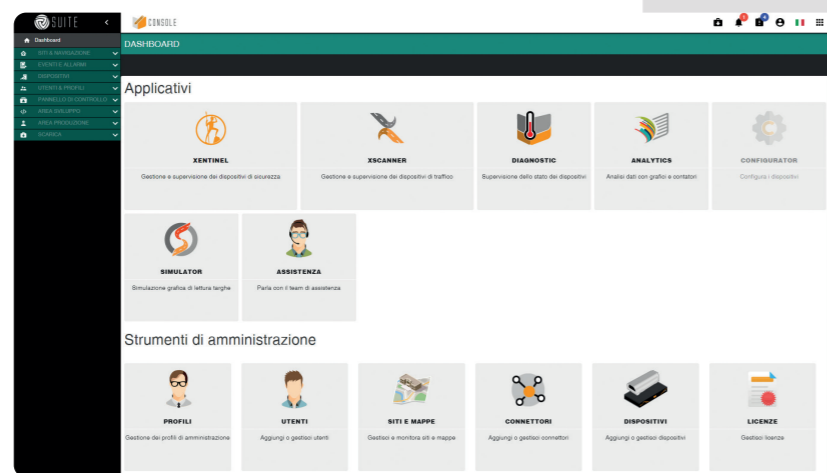
Alarm management

Remote control of the activation and deactivation status of areas

VideoWall display of customers for patrol activities

Management of patrol requests

ORA	DESCRIZIONE	AREA	STATO	OPERAZIONE
09:09:52	Serie Vigilante	Corriere	Area bloccata	Stato in controllo
09:14:09	Serie Vigilante	Passaggio/Finito	Area bloccata	Stato in controllo
09:14:14	Serie Vigilante	Fianco/Accesso/Esito	Area bloccata	Stato in controllo
09:15:56	Serie Vigilante	Retro/Fianco/Vigilante	Area bloccata	Stato in controllo
09:16:03	Serie Vigilante	Scatole ripari	Area bloccata	Stato in controllo



Console

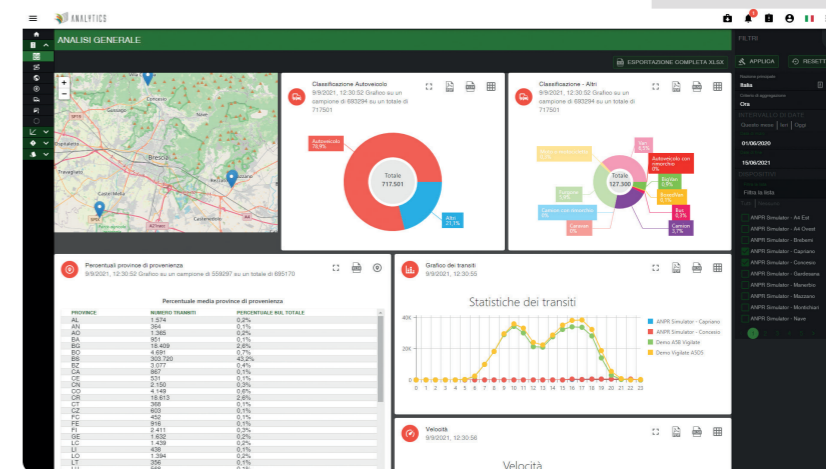
Management and administration of the general configuration of the v-SUITE platform

Console is the main administration tool of v-SUITE, it is used for management of users, rights and assets used by the various licensed applications or more simply by consulting the logs.

This area is aimed at administrators of system, maintainers and managers in general to correct functioning and correct management operation of the v-SUITE instrument.

Caratteristiche principali

- Application dashboards
- Management of navigation maps
- Calendar Management
- Automation Management
- Device management
- User Management
- Profile Management
- Group and Contact Management
- Management of usage licenses
- General event and activity log archive
- Supervision VideoWall management



Analytics

The software for the supervision and analysis of all the information coming from security and traffic management devices via graphic and intuitive dashboards.

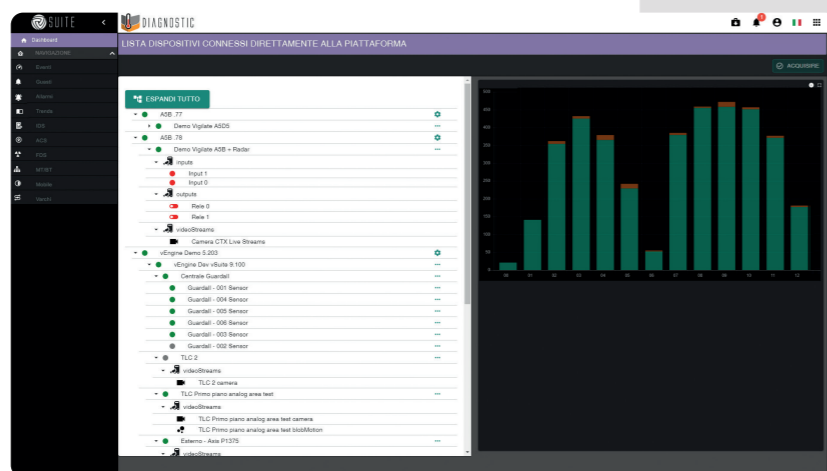
Analytics is the software application that allows you to analyze the data coming from the various systems connected to the v-SUITE, both security and traffic. Having all the plant information in a single environment allows the Analytics application to perform complex data aggregations and searches in order to make strategic decisions in the management of large structures and systems.

The multiple analysis dashboards are available in graphic, tabular and various formats to allow easy

export to third-party applications.

The service is mainly aimed at those who need to analyze and make strategic decisions and for this reason need to have a clear and detailed vision of operational scenarios. A powerful and intuitive graphic environment that displays in a simple and orderly way. All the information arriving from the territory is organized into simple reports capable of representing the state of things in an effective summary form.

Traffic graphs
Security charts
Access control charts
Hardware diagnostic charts



Diagnostic

The software used for technical supervision e Supervised product maintenance

v-Diagnostic is an application dedicated to managing the functional aspect of the products and devices present in the systems connected to the platform, it allows you to be constantly informed on the correct functioning of the devices and intervene promptly in the event of technical unexpected events. It is composed of a series of dashboards that report the device operating information with views both in real time and for historicizing data.

The application also generates technical alarm events, which are reported on the platform and which allow operators or maintenance workers to be immediately informed of the occurrence of any fault in the equipment of their own system.

v-Diagnostic manages information privacy-free and for this allows third-party structures to provide services surveillance and maintenance of systems in a B2B logic.

Diagnostics of functional parameters
Update status
Performance control
Management of system critical issues

Features

- General diagnostics and alarm signaling on exceeding set thresholds
- Product Update Status
- Available/unavailable storage space
- Device temperatures
- Processor Usage
- Memory usage
- Communication Channel Status
- Performance analysis
- Analysis of the operating status
- Control of the effectiveness of the application over time



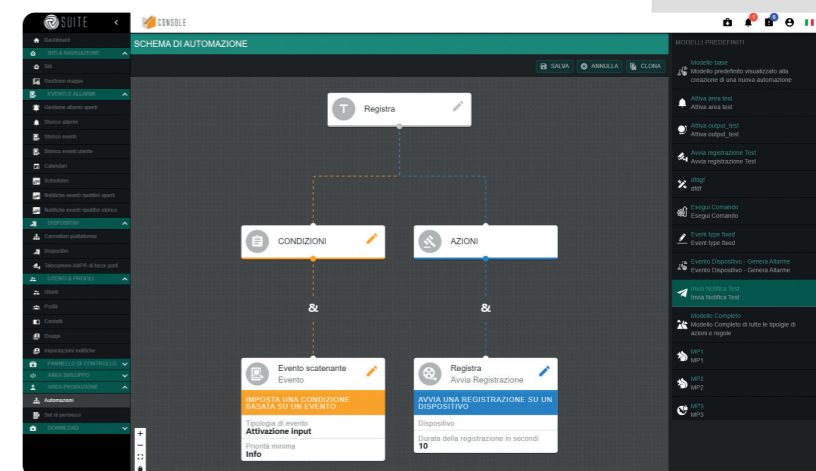
Automation

The software for creating automatic processes in the face of events triggered by the system

The v-SUITE module allows you to create complex logic by combining different events together so that an alarm or warning scenario or something else is supported by multiple events that validate and prove it.

At this point, even the automatic reactions to alarms can be configured directly by the user as a series of multiple operations that the system carries out automatically.

This package allows the user to define how the alarm



detection system works and what the system should do in the event of an alarm.

To change the functioning of the system, it is no longer necessary to develop on the program code, the user does it with simple logical AND and OR operations.



Xwall

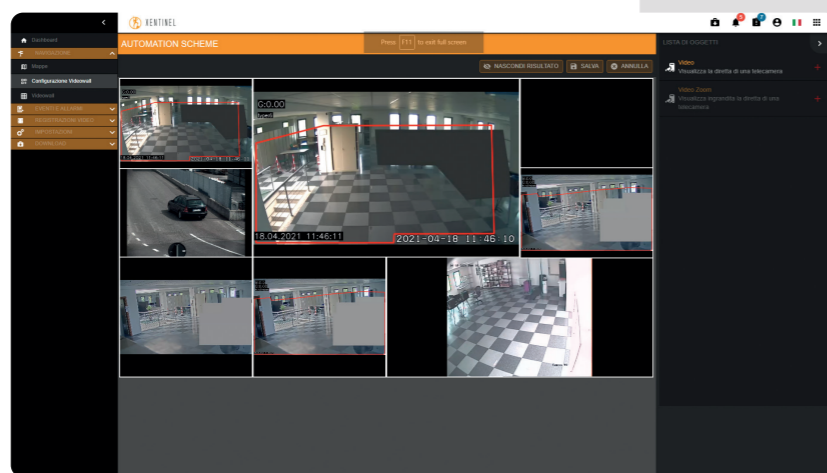
Vigilate's smart video wall, automatic, predictive, intelligent, ideal for small, medium and large control centers

Xwall is the advanced camera supervision software, installed in the control room of companies or municipalities and is a valid tool for viewing dangerous or alarm situations in real time. Thanks to its characteristics, Xwall is not a common VideoWall software but an intelligent system to automatically or semi-automatically manage information coming from field devices. In the event of an alarm, Xwall displays not only the videos of the area affected by the alarm but also those

of neighboring devices. The VideoWall automatically reacts to the device in alarm by presenting a SmartView on the screen with images of the devices in the area surrounding the alarmed device.

Main features

- Customizable
- Dynamic mode with automatic opening of each camera in alarm state
- Automatic opening of context videos in proximity to the alarm
- Real-time display of alarms



Configurator

The utility is dedicated to setting and controlling the configurations of Vigilate products connected to the v-SUITE platform.

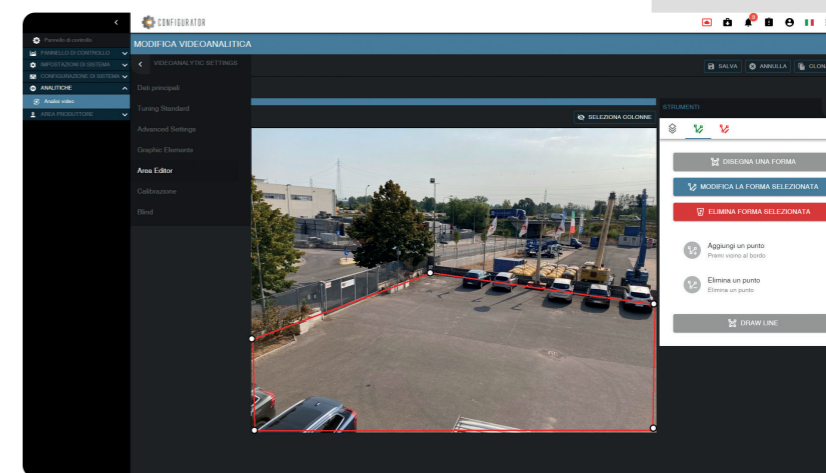
Configurator allows you to directly access the single product or make multiple settings on multiple products simultaneously. The installation and configuration phase is always the most delicate, Vigilate offers you a universal tool to remotely configure the products installed in the field, an ideal tool for configuring and maintaining the settings and tuning of the devices quickly and safely directly

from the platform v-SUITE. Configurator also has a special area dedicated to the management of versioning relating to the firmware of the installed Vigilate products. This area allows the automatic download of the latest versions of the product firmware and performs the update on the products of your system.

System parameters
Algorithm calibration
Privacy settings
Communication and protocols

Caratteristiche principali

- General status of the installed base
- Manage maximum privacy settings
- The general level of configuration
- User Profile Manager
- System parameters
- Calibration of video analysis algorithms
- Configuring Data Interchange Protocols
- Management of events and actions
- Info and firmware updates
- Video streaming supervision
- Restore and restart





4

Speed UP your business

Take advantage of the
potential of Vigilate's
iPaaS platform

Solve your systems
integration problems

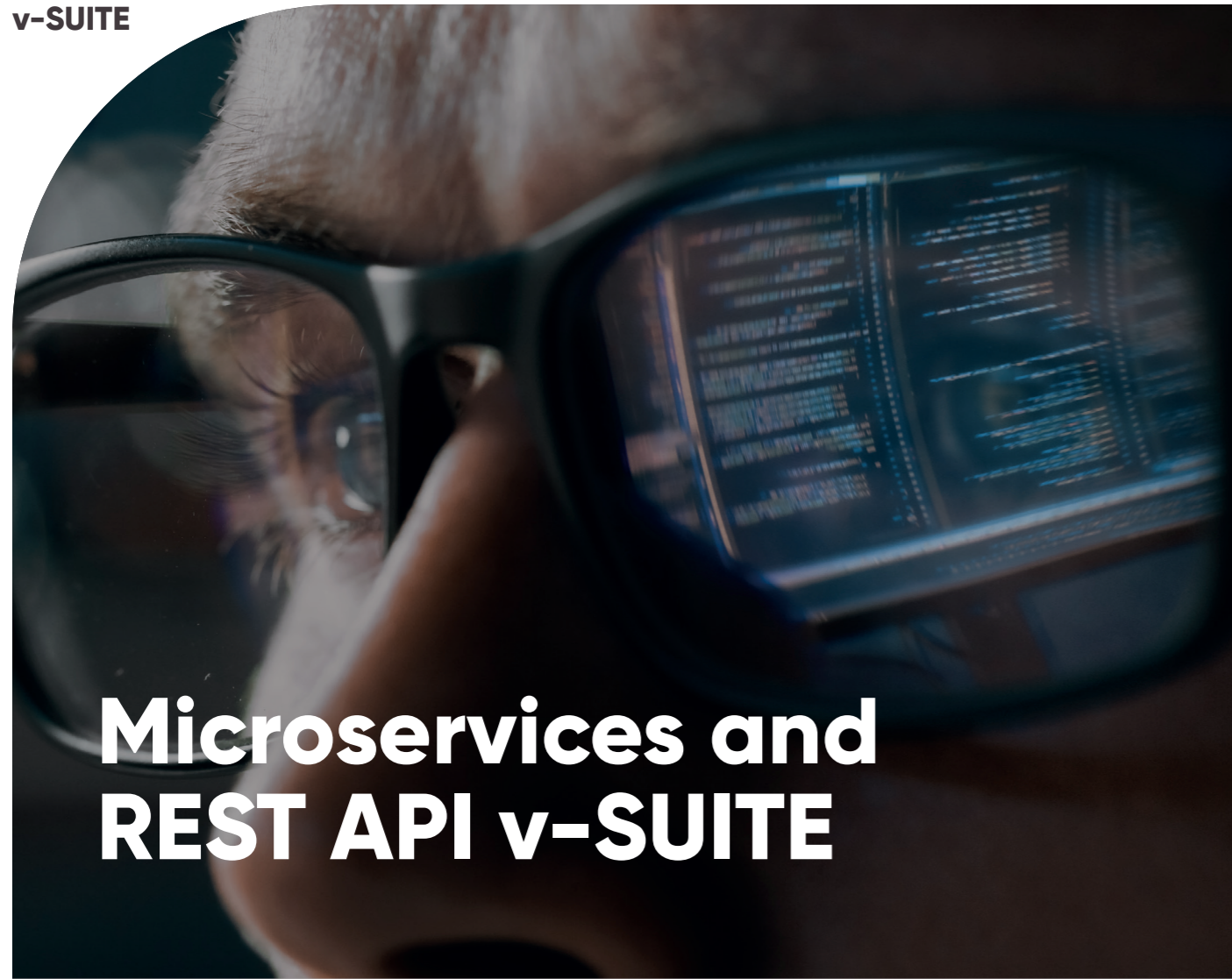
Reduce your application
development time by using
our {REST} APIs

What can you do:

Connect your
application with
API{REST}

Connect a third-
party application
with {REST} API

Develop your
application within the
Vigilate technology
platform

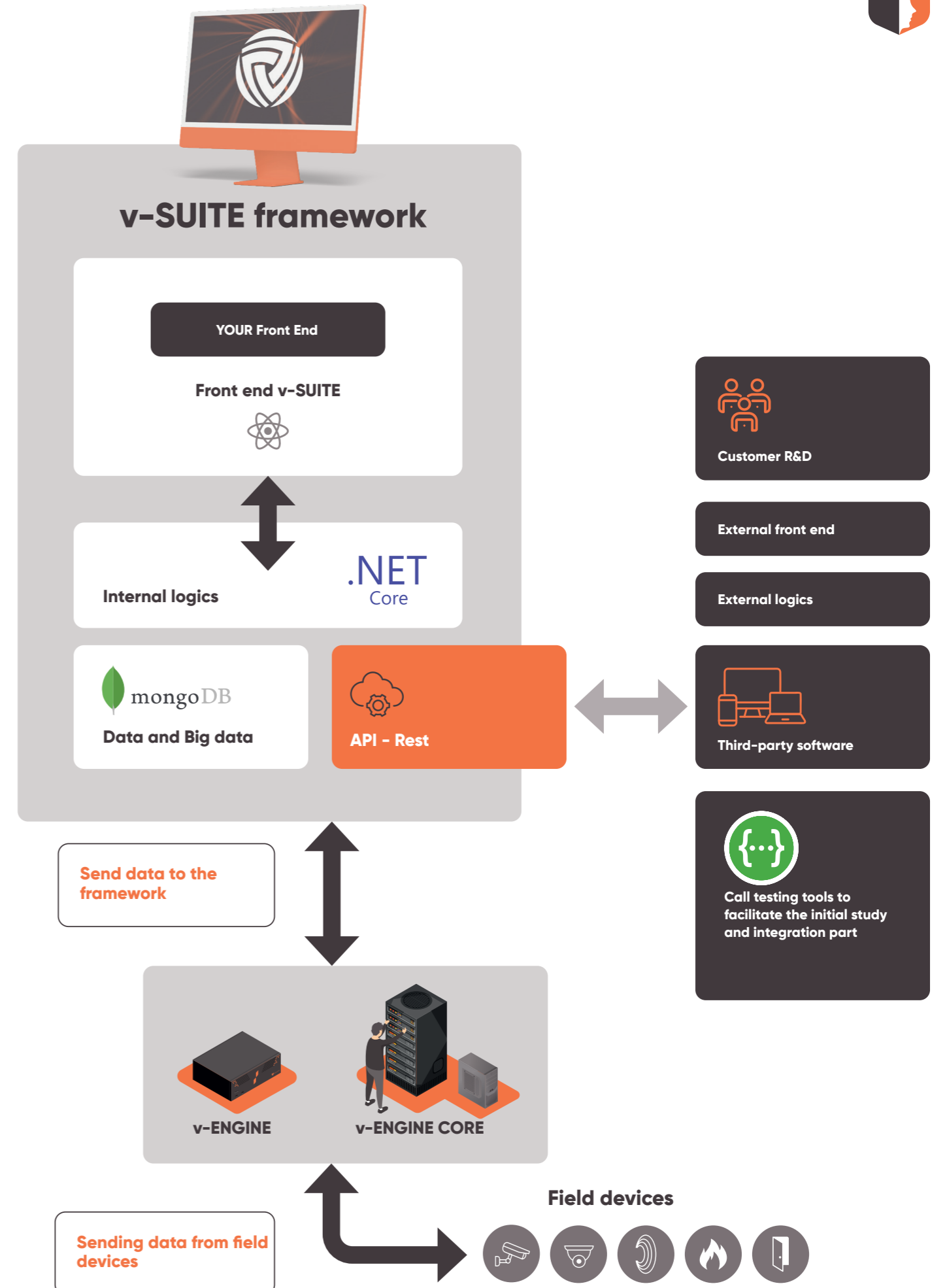


Microservices and REST API v-SUITE

For the most advanced system integrators, Vigilate, through an M2M level composed of microservices and REST API calls, offers the possibility of accessing information and events provided by the field devices, avoiding the entire process of analysis and integration of individual products. v-SUITE also offers services based on internal logical procedures that allow you to draw on event and alarm management procedures and functions as well as analytical information.

Some examples

- User authentication
- Plant management (sites-areas-devices)
- User and profile management
- Device control service
- Maps
- Notifications and contact list
- Multimedia
- Event history
- Alarm management
- Remote systems management
- Management of installed applications and licenses
- Statistics
- Automations and calendars
- Traffic management (license plate lists, etc.)
- SmartRoad (optional service)
- Management of third-party ANPR cameras
- Interfacing to the motorization

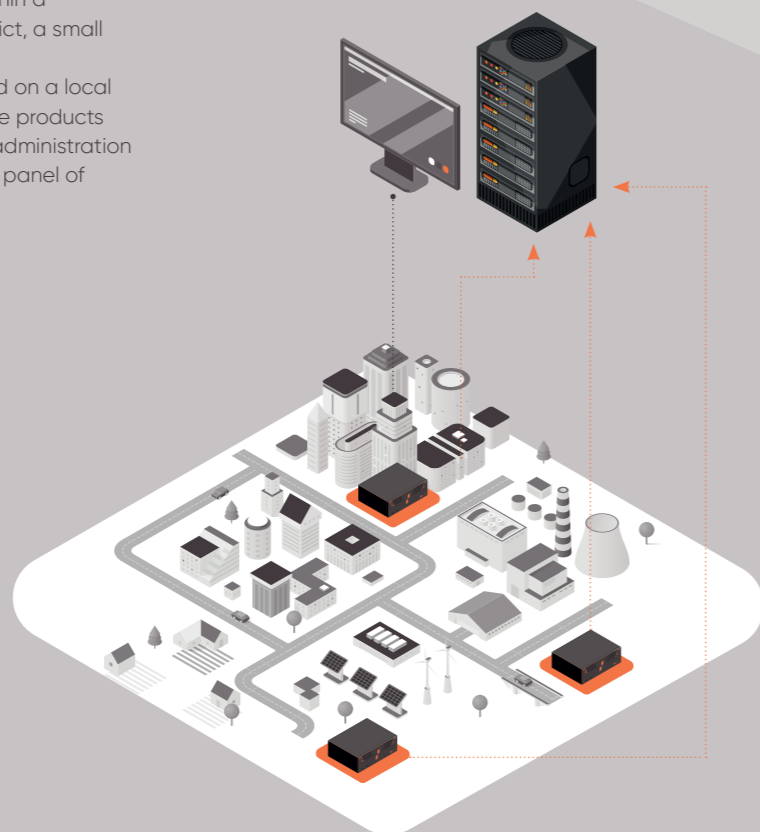




Architettura installative v-SUITE

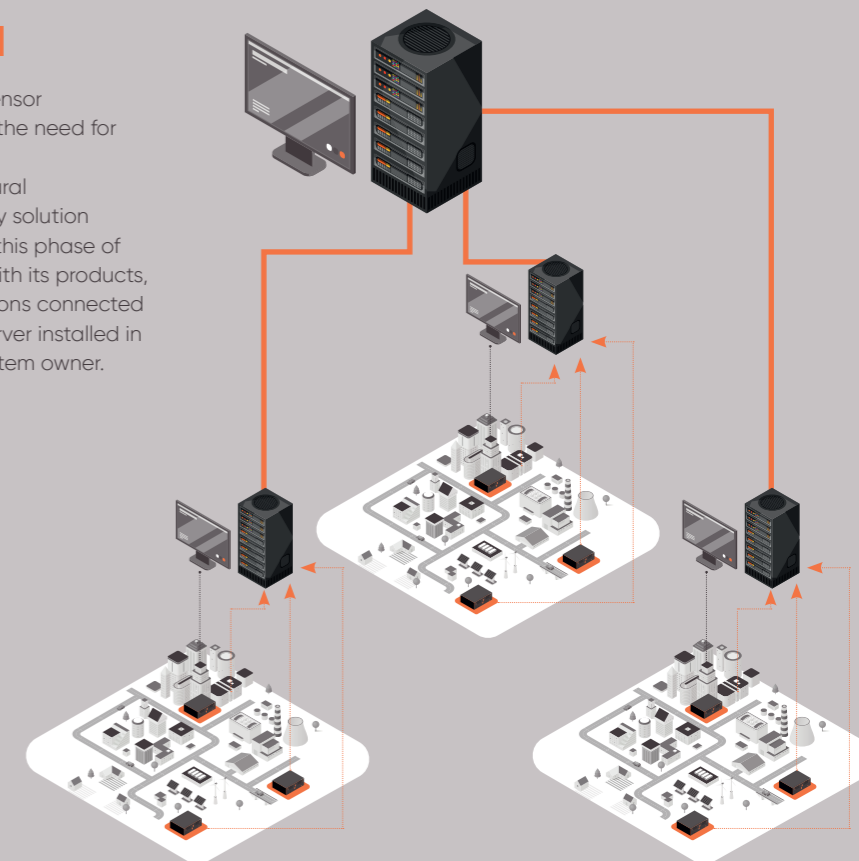
Local

Often the need to manage multiple devices within a network infrastructure in a company, a city district, a small municipality or a large city. In this case, Vigilante products can be centralized on a local server (Local Architecture) in LAN. In this case the products are managed and monitored through a single administration platform, a real supervision and general control panel of your plant.



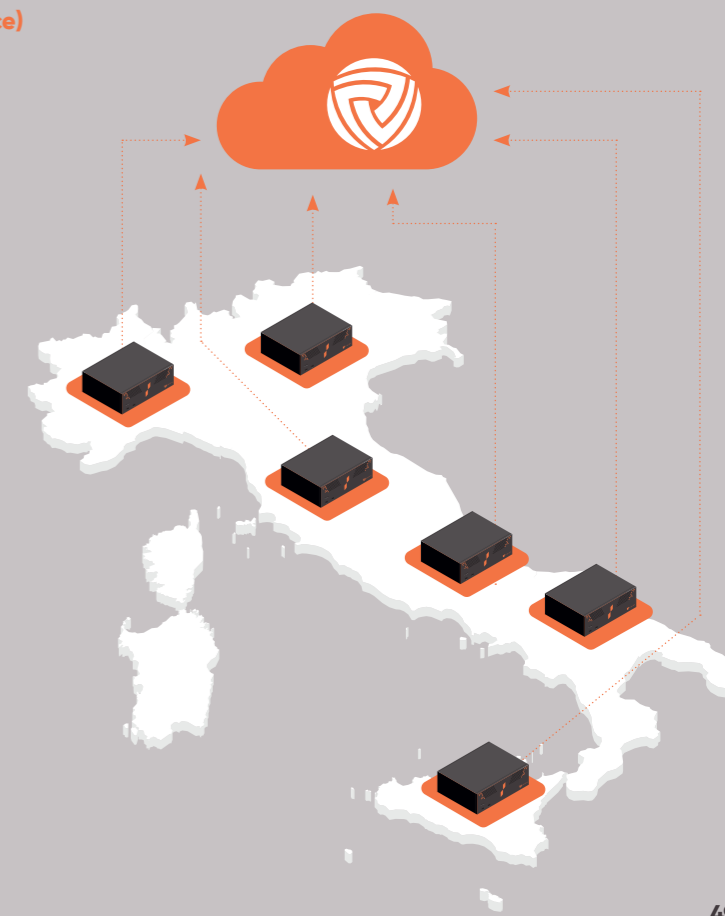
Private e Private Cloud

The technological evolution of camera and sensor analysis and control products is giving rise to the need for increasingly scalable systems. Even today, for some (for generational or cultural reasons), the concept of Cloud as a scalability solution generates fears, doubts and uncertainties; in this phase of technological and cultural change, Vigilante, with its products, offers a solution for the many private installations connected in a private WAN network, centralized on a server installed in a remote location (Housing) owned by the system owner.



Public Cloud SaaS (software as a service)

The theme of sharing and fast availability of information is increasingly present in the world of traffic management and safety. Traffic control and supervision systems distributed on the national and international territory must, more and more often, collaborate and exchange data with each other and between an increasingly large number of users in the sector; to this end, Vigilante offers the possibility of using its products even within complex and scalable public cloud computing infrastructures. Supervised by means of a usage model SAAS offers the possibility of implementing multiple installations connected to a Cloud platform that can be used As A Service. In this configuration, the user uses the device management software by paying a monthly fee for using the platform.





Vigilate is a "tech company" specialized in the production of devices and software platforms for security and traffic control.



Traffic

- Parking
- Homeland Security
- Highway & Tolling
- Enforcement
- Smart Road



Sicurezza

- Companies, shops, hotels, car parks
- Critical infrastructures
- Banks
- Retail, Fashion, GDO
- Control Room
- Logistics



Vigilate S.r.l.

**Legal and operative site
Via Napolenica, 6,
25086 Rezzato BS Italy**

**VAT: IT01598660056
Tel: +39.0308081000
Pec: vigilatesrl@pec.it
SDI Code: W7YVJK9**