



VIGILATE

www.vigilatevision.com



Company Profile

Embedded technologies, software platforms, and artificial intelligence to transform technological infrastructures into intelligent ecosystems.

WHO WE ARE

Italian Innovation

Founded in 2016 following a management buy-out, Vigilate inherits the expertise of ETH Security (part of the Eurotech Group).

With a team of over 40 highly qualified professionals, we are an Italian company that develops devices and platforms for security, traffic control, and technological integration.



Why choose Vigilate

Vigilate is the ideal technology partner for system integrators looking to simplify infrastructure, integrate heterogeneous systems, and enhance their offering with advanced, reliable solutions.

We deliver end-to-end solutions for urban and corporate security, smart roads, and smart buildings—all powered by a modular, flexible, and evolving platform designed to adapt to any requirement.

What Sets Us Apart

We deliver fully managed solutions that integrate hardware, systems, and software into a unified, coherent ecosystem. Each component is developed in-house, giving us full ownership and ensuring maximum interoperability with third-party systems – eliminating the risk of vendor lock-in.

Our strength lies in our flexibility: we tailor modules and features to the specific needs of each project. And we don't stop there – we offer continuous evolutionary support, allowing the platform to grow alongside your projects without ever needing to start from scratch.

By choosing Vigilate, you partner with an Italian company that has complete control over its production and operations. From device design to embedded software, every stage is developed internally – delivering true innovation to meet every technological challenge.



SERVICES

Vigilate's offering goes far beyond the development of advanced products and platforms: our core strength lies in engineering bespoke solutions for complex, high-impact projects.

With **deep expertise in system integration, video analytics, and diverse big data management**, we are equipped to tackle new challenges and design solutions tailored to each client's specific needs.

Our services cover the entire project lifecycle, from preliminary analysis and technical consulting, to dedicated software development and the deployment of scalable, distributed architectures – **all the way through to post-deployment support, including training and continuous updates.**

Every project begins with a deep understanding of the customer's requirements, brought to life through the combination of technical expertise and strategic vision.

Behind every solution are the people of Vigilate: engineers, developers, and researchers who turn experience and creativity into real innovation.

It's the human factor that makes our technologies possible – **driving a continuous cycle of research, development, and improvement** that delivers not just products or services, but **intelligent ecosystems built for the smart cities, smart roads, and smart buildings of tomorrow.**



CERTIFIED INNOVATION

We are listed on the National Cybersecurity Agency's marketplace and hold the following certifications:

- EN ISO 9001:2015
- ISO/IEC 27001:2022
- ISO/IEC 27017:2015
- ISO/IEC 27018:2019
- ISDP© 10003:2020 (Traffic Products & Platform)

WHO WE WORK WITH

- **Large enterprises and corporate groups**, seeking to protect headquarters, branches, and facilities through scalable and centralized solutions
- **System integrators and installers** looking for a reliable technology partner for complex projects and integrated infrastructures
- **Public authorities and local governments**, involved in developing smart cities and enhancing urban security
- **Law enforcement agencies**, for advanced prevention, monitoring, and investigation activities
- **Transport operators and critical infrastructure managers** (airports, railways, highways) requiring intelligent and automated systems
- **Technology partners and OEMs** aiming to integrate advanced, interoperable solutions into their own platforms



EXPORT

Our export activity originated in the **traffic sector, which remains at the core of our global presence.** We are actively consolidating our growth in Europe – with a particular focus on Eastern Europe – while also establishing key partnerships in non-European markets, including the Arab world and various regions in Asia.

The parking sector is playing an increasingly prominent role, currently experiencing strong expansion. In this area, we are introducing innovative solutions such as

barrierless free-flow access, which enables fast, seamless entry, alongside **XPARK, our advanced software for integrated parking management** – a major step toward smarter and more efficient mobility.

Supporting our international expansion is a **strategic partnership with a Madrid-based company specialized in the Spanish and Latin American markets,** allowing us to effectively serve both Spain and the broader South American region.

APPLICATIONS

Vigilate solutions are applied across a wide range of fields – from security and mobility to intelligent building management.

Thanks to an approach that combines **high-performance hardware, embedded software, and advanced management platforms**, our systems effectively address complex monitoring, control, and supervision needs.

Whether it's securing critical infrastructure, optimizing traffic flows, or efficiently managing energy consumption and building technologies, **Vigilate provides reliable, scalable, and easy-to-integrate technologies**, all supporting a modern and sustainable smart city vision.



Smart City

Smart Roads

Homeland Security

Corporate and Banking
Video Surveillance

Private Security Firms

Public Sector and
Municipalities



MESSINA - SMART CITY



Context: the city of Messina was facing challenges related to security, traffic, and environmental management, with fragmented systems that were difficult to coordinate.

Solution: a Smart City platform was developed, leveraging advanced AI algorithms to recover the value of past infrastructure investments while delivering a technological upgrade. The system integrates traffic control, illegal dumping detection, crowd monitoring, and environmental surveillance into a single unified platform.

Results: Today, the city is more connected, sustainable, and secure, with the ability to anticipate and respond to critical situations through real-time data and centralized management.



ITALTRANS - SMART SECURITY



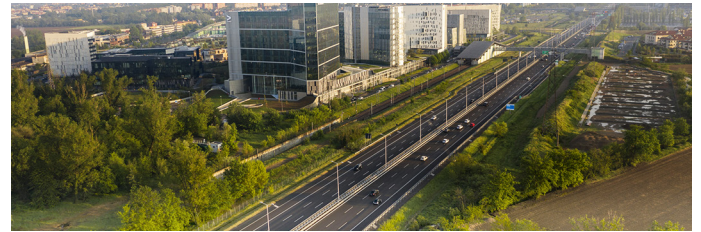
Context: Industrial areas and corporate sites needed greater control over security, access, and logistics, often managed through separate systems, along with a national operations centre.

Solution: The Integrated Smart Security approach combines video analytics, access control, yard management and parking management, also integrating fire detection and intrusion systems into a single control room.

Results: A smart, safe, and connected logistics environment in which everything is monitored and coordinated, boosting both efficiency and protection.



SERRAVALLE - SMART ROAD



Context: The Milano Serravalle motorway network was seeking advanced solutions to improve safety, traffic efficiency, and infrastructure management, particularly along high-risk sections and tunnels.

Solution: A Smart Road system was developed based on ITS, AID, RSU, and CCTV technologies, capable of analysing dynamic risk, monitoring network conditions, and calculating real-time travel times.

Results: A new generation of mobility emerges—safe and predictive—where the infrastructure communicates with vehicles, anticipates events, and enhances the travel experience for both drivers and operators.



TWELVE GROUP - SMART BUILDINGS



Context: Twelve Group's building complexes needed a more efficient management of systems, services, and maintenance, with limited control over consumption and safety.

Solution: The Smart Building system centralises the management of facilities, CCTV, parking, assets, and ticketing, also integrating documents and billing for a fully digital and transparent administration.

Results: Twelve Group transforms the residential complex into a safe, comfortable, and efficient environment, where every service is connected and intelligently managed.

Security & Integrated Safety

In the domain of physical security and monitoring, we offer devices and systems based on proprietary solutions for:

- **Advanced video surveillance and AI-driven video analytics**, including behavioural recognition and anomaly detection
- **Integration of alarm and perimeter protection systems**
- **Integration with access control systems**
- **Integration and supervision of third-party systems** for fire detection and alarm control panels
- **Edge computing for field-deployed devices**, enabling data filtering and processing directly on peripheral devices (reducing bandwidth costs and latency)
- **Seamless integration with existing IT infrastructures**, ensuring a high level of interoperability
- **Tailor-made, turnkey solutions** for corporate buildings, management centers, and high-security installations

Our security solutions are designed to combine performance, reliability, and integration capability, ensuring complete system control.

Features

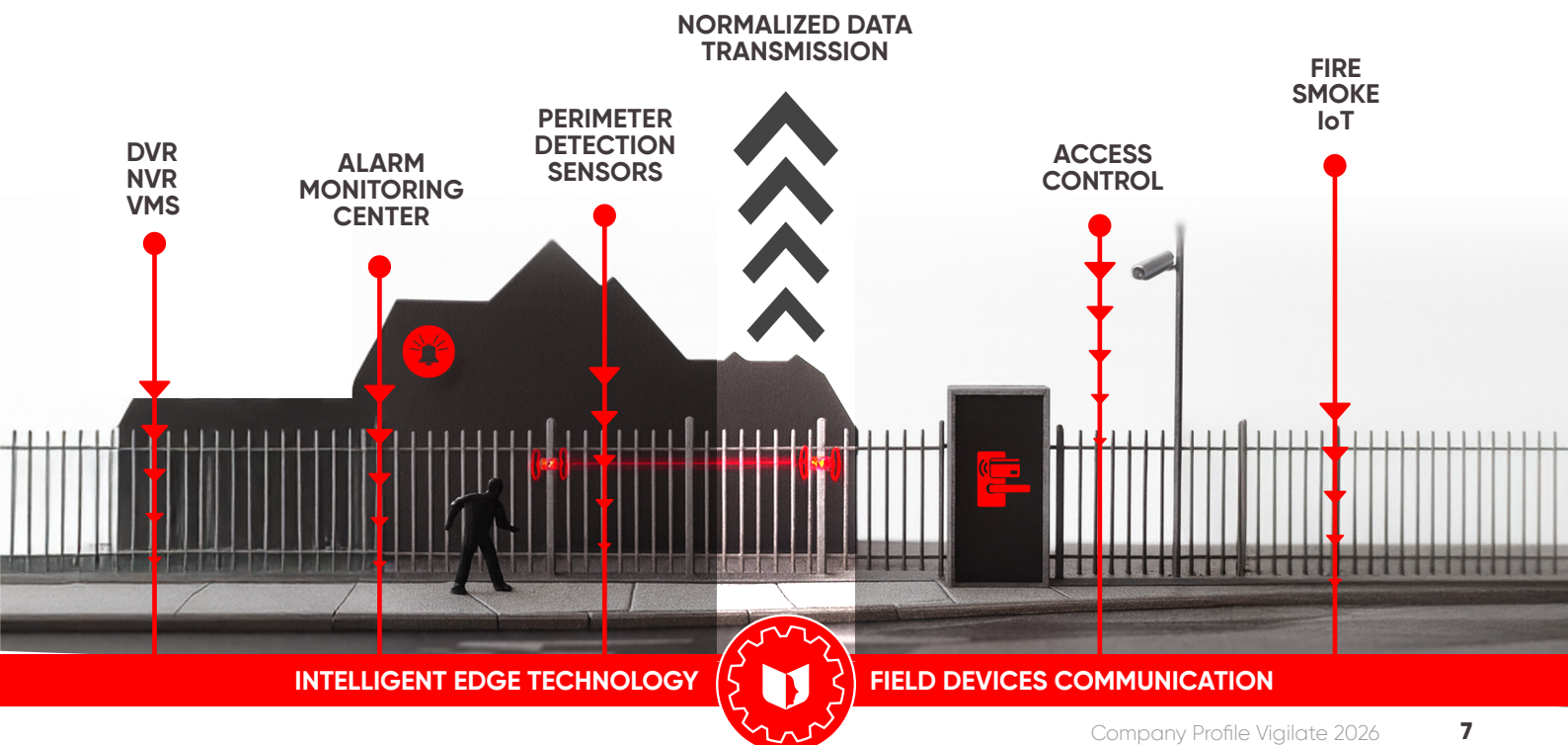
- NVR
- Subsystem integration
- Integration with building automation systems
- Diagnostics
- Traditional and AI-based video analytics
- Intrusion detection via cameras
- IoT device integration
- Videowall monitoring

Market Sectors

- Airports
- Railway facilities
- Border control
- Military bases
- Homeland Security
- Banks
- Retail
- Checkpoints

Products

- EDGE devices
- NVR devices
- Radars
- Software platform





**Versatile
Scalable
Field-integrated
Video-analytic
Connected**

Vigilate's intelligent NVR, designed for the integration and management of field devices and systems: CCTV, video analytics, intrusion detection, fire detection, access control, and IoT.

From just a few field sensors and a handful of analysed cameras...

...to large-scale systems with many field sensors and numerous analysed cameras.



V-ENGINE AI

Vigilate's technological HUB for systems of up to 16 cameras

V-ENGINE AI is Vigilate's compact device designed for managing security systems with a limited number of connected devices – the ideal balance between processing power and software capabilities for the effective management of small and medium-sized installations.



V-ENGINE CORE AI

The software for managing large-scale Systems

The V-ENGINE CORE AI software is an optimal solution for managing large and very large installations. It can be deployed on physical or virtualized server architectures and is capable of supporting systems with tens of thousands of devices, including cameras, subsystems, and field sensors.

Security Applications of the V-SUITE platform



XENTINEL

CCTV and Physical Security Management



XENTRY

Access Control Management



XOC

Remote supervision and control



XWALL

Videowall Operations Center



RONDA

Mobile App Patrol services

Traffic / ANPR & Monitoring

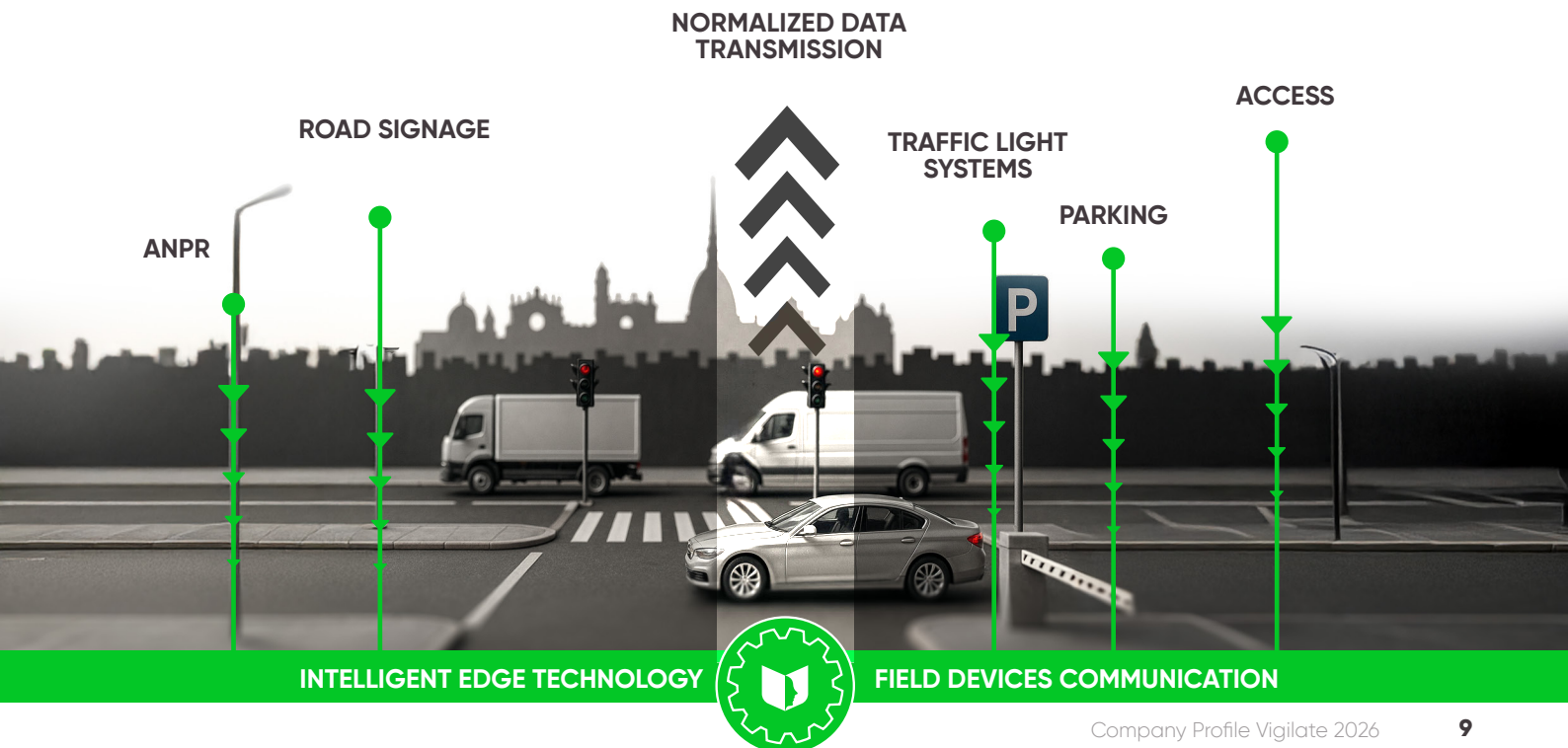
A wide range of products for traffic and vehicle control:

- **High-performance license plate readers (V-LANE)**, capable of operating even in challenging environmental conditions
- **V-RSU, the Road Side Unit with CV2X** (Cellular Vehicle-to-Everything) **and DSRC** (Dedicated Short-Range Communications) **technologies**.
V-RSU enable autonomous driving through intelligent communication between vehicles and infrastructure, improving safety, prevention, and urban traffic management
- **ITS (Intelligent Traffic System) functions**: travel-time calculation, speed monitoring, congestion detection, and critical-situation analysis
- **Access control for parking areas** and private zones
- Modular design for integration with additional sensors and devices (e.g., gateways, barriers)
- Support for integration with third-party systems and native interoperability

With Vigilate, road operators and local authorities can gain full visibility over traffic, improve safety, and plan smarter interventions

Technologies

-  **Cameras for parking and access control**
Access control for parking areas, residential zones, or unattended sites
-  **National security cameras**
Urban road safety monitoring
-  **Mobile ANPR cameras**
Highway patrol, stopped-vehicle monitoring, roadside checks, and enforcement points
-  **Cameras for highways and high-speed roads**
Intelligent traffic management and monitoring (ITS)
-  **Smart Roads System**
Intelligent technology for Smart Roads and Smart Cities
-  **Enforcement**
Vehicle speed monitoring and regulation to ensure road safety
-  **Tolling**
Devices for monitoring transits on toll road sections



TRAFFIC PRODUCTS

Parking and Access Control

Bispectral ANPR cameras for parking and access control



Homeland Security

Traffic monitoring and analysis for territorial control and safety



Enforcement

Red-light function, limited-traffic-zone components and green-zone components, tolling components, speed-control components.



Highways and high-speed roads

License plate recognition cameras for highways, ring roads, and major arterial routes



Traffic Applications of the V-SUITE supervision platform



XPARK

Parking management



XSCANNER

Transit Monitoring and Search



ITS MANAGER

Intelligent Traffic System – Smart Mobility Manager

Built-in video analytics and functions (depending on the model)

- On-board OCR library supporting 41 European countries, 13 Asia, 6 Africa, 5 South America
- Support reading Arabic and Persian characters
- Reading special license plates (diplomatic corps, police forces, trams)
- Enabling/disabling OCR reading supported via remote synchronization with calendar and time slot management
- Reading Hazardous materials (ADR kemler codes)
- Nationality recognition
- Daytime recognition of vehicle types (Cars, Trucks, Trucks with trailers, Motorcycles, Motorcycles, Mopeds, Buses, Mini vans, Big vans, Box bodies, Caravans, unknown)
- Night-time recognition of vehicle types (trucks, buses, cars, motorbikes, unknown)
- Daytime color recognition (black, white, grey, red, blue, yellow, green, orange, pink, purple, cyan, unknown)
- Daytime brand recognition around 100 brands supported
- Daytime model recognition approximately 400 models supported (rear classification)
- Road gate AID
- Speed estimate function estimate of the instantaneous speed of a single transit
- Wrong-way vehicle alarm function, estimate of the direction of transit
- Vehicle stopped in the gap alarm function
- Queue alarm function in the gate (traffic stopped) traffic status detection (regular, slow, queue, unknown)
- Slow traffic alarm function
- Lane statistics: occupancy, flow-rate, heading, speed
- H264 context video stream for vms onvif profile s
- High resolution on-board video recording flow
- Transit video recording
- Radar/laser ready integration configurator and protocols
- Red traffic light function

SMART BUILDING

Smart Building & Intelligent Building Management

In the context of digitalised spaces, we provide modular technologies and platforms for intelligent building control, with solutions designed for:

- **Devices and software for security management** and access control for both people and vehicles
- **Automation** of electrical systems, HVAC, lighting, and energy management
- **Integration with BMS systems** (Building Management Systems) and centralised supervision
- **Multi-level access control** and integrated attendance management
- **Video analytics for security and intrusion detection**, people-flow monitoring, and space optimisation
- **Environmental monitoring** (air quality, temperature, humidity, CO2) and anomaly detection
- **Edge computing** for local data processing and reduced latency
- **Native integration with IT and IoT infrastructures**, ensuring full interoperability
- **Scalable turnkey solutions** for offices, corporate campuses, healthcare facilities, retail, and industrial sites
- **Management of maintenance schedules and supplier contracts**

Integrazione

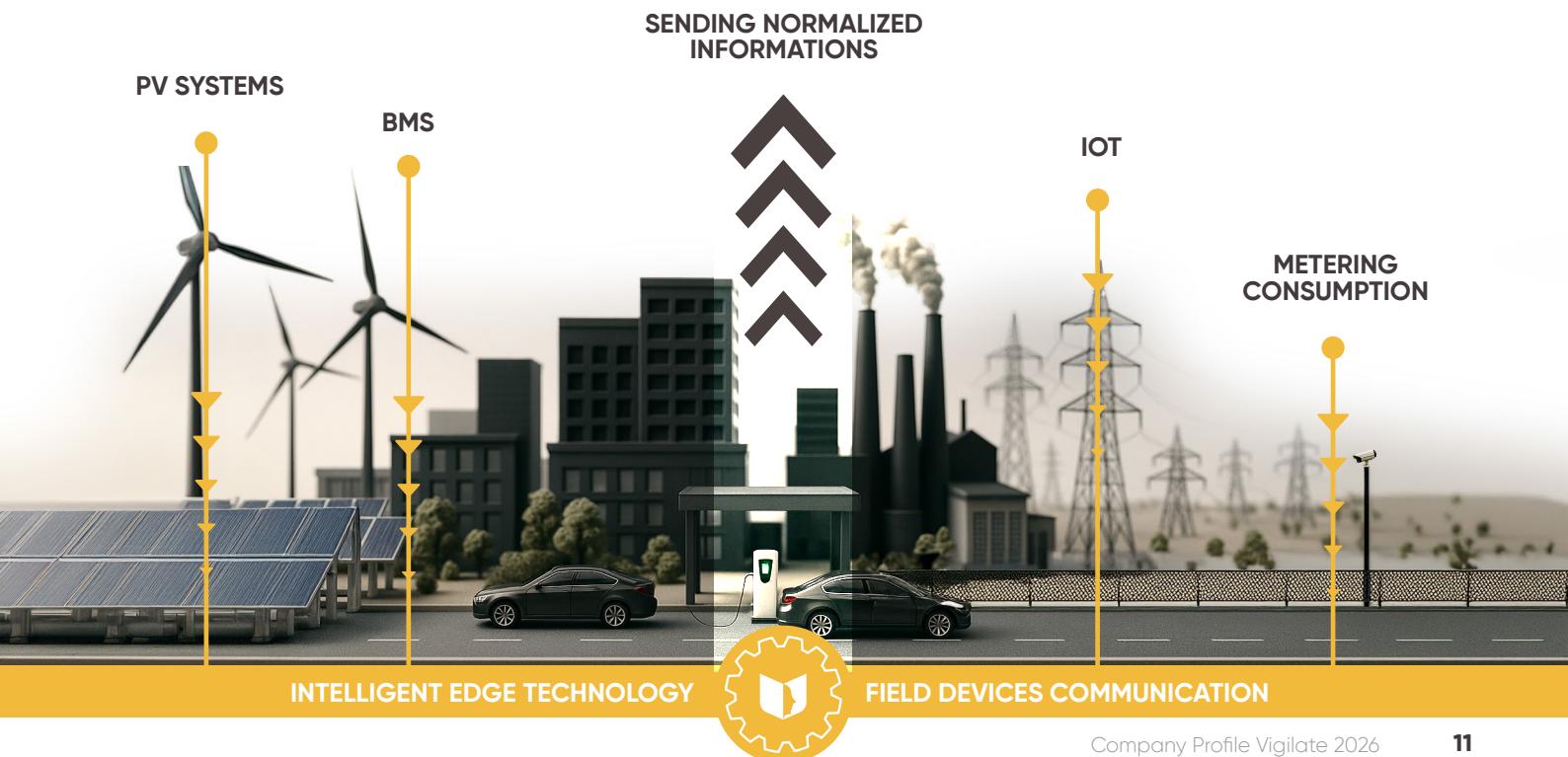
- Building automation
- System integration
- Diagnostic Systems

Markets

- Supervision of energy systems
- Consumption monitoring
- Plant diagnostics
- Metering and utilities management
- Integrated control of building technology systems

Products

- EDGE field devices
- NVR devices
- License plate readers for parking
- Software platform



PRODUCTS EDGE TO PLATFORM



V-SUITE

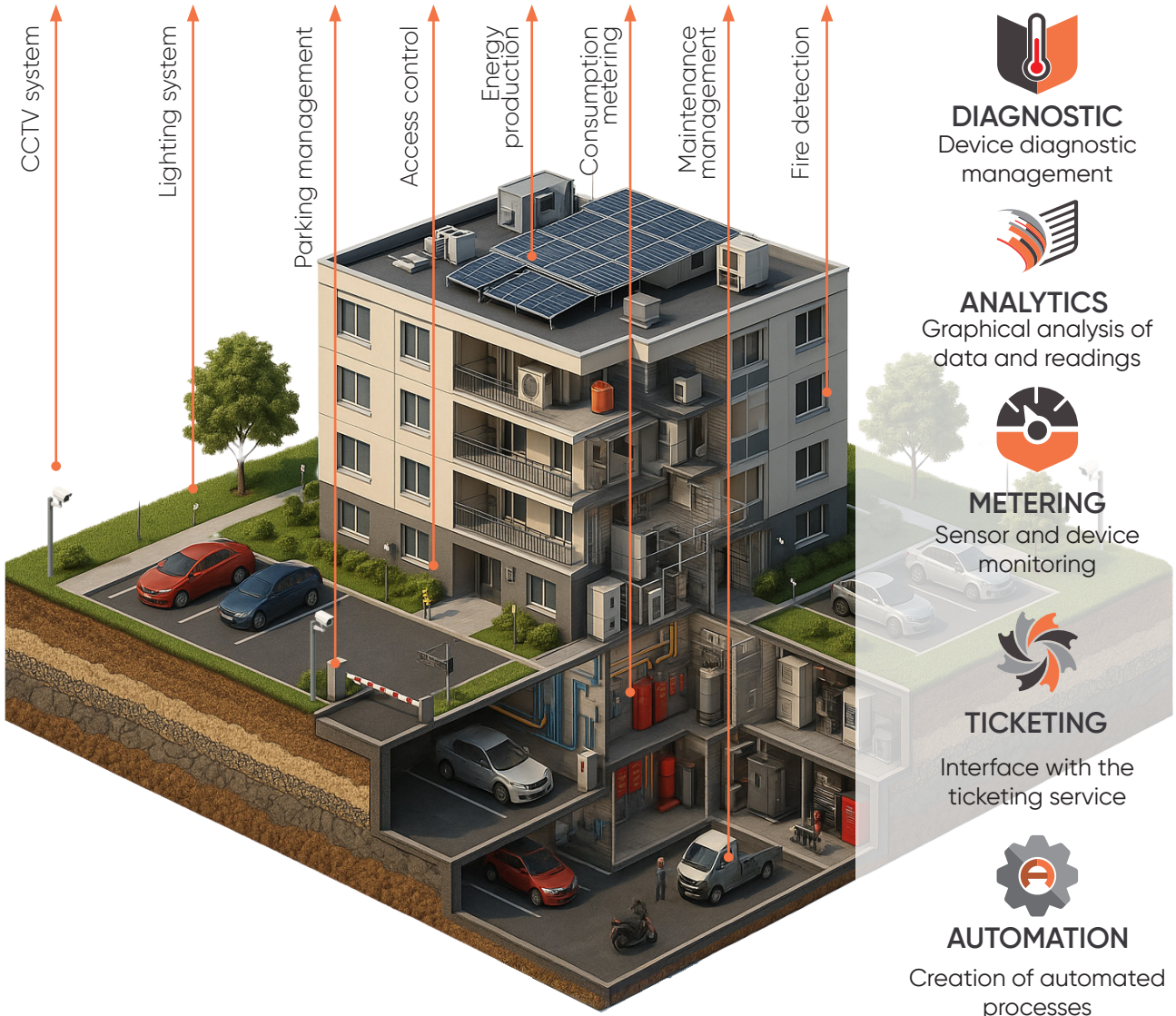
Supervision platform



Field edge device



Integration and standardised communication protocols with the supervision platform



PROPRIETARY V-SUITE PLATFORM

V-SUITE is our central software platform, managing and coordinating systems across traffic, security, and smart building environments. It serves as the “core intelligence” that seamlessly connects hardware devices with vertical applications.

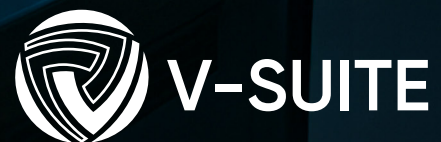
Main modules:

- **X-SCANNER:** license plate search, transit analysis, and historical queries
- **XENTINEL:** physical security management, CCTV, and video analytics
- **XENTRY:** advanced access control
- **XPARK:** parking control and management
- **OPERATION CENTER:** centralised platform monitoring and remote management
- **ASSET MANAGER:** inventory, monitoring, and maintenance of corporate assets
- **TICKETING:** ticket management, reporting, and workflow automation
- **DIAGNOSTIC:** remote diagnostics and maintenance tools
- **ITS MANAGER:** advanced intelligent traffic features (travel-time calculation, simulations, alerts)

Distinctive features of V-SUITE:

- Modular and scalable architecture
- Full end-to-end stack (frontend, middleware, backend)
- APIs and endpoints for integration with external systems
- Customisable dashboards and user interface
- Built-in data security and encryption
- Continuous component monitoring and predictive diagnostics

With V-SUITE, customers gain a unified solution that eliminates technological fragmentation, simplifies management, and enhances operational capabilities.



VIGILATE ARCHITECTURE

Integrated ecosystem for security, smart building, and traffic

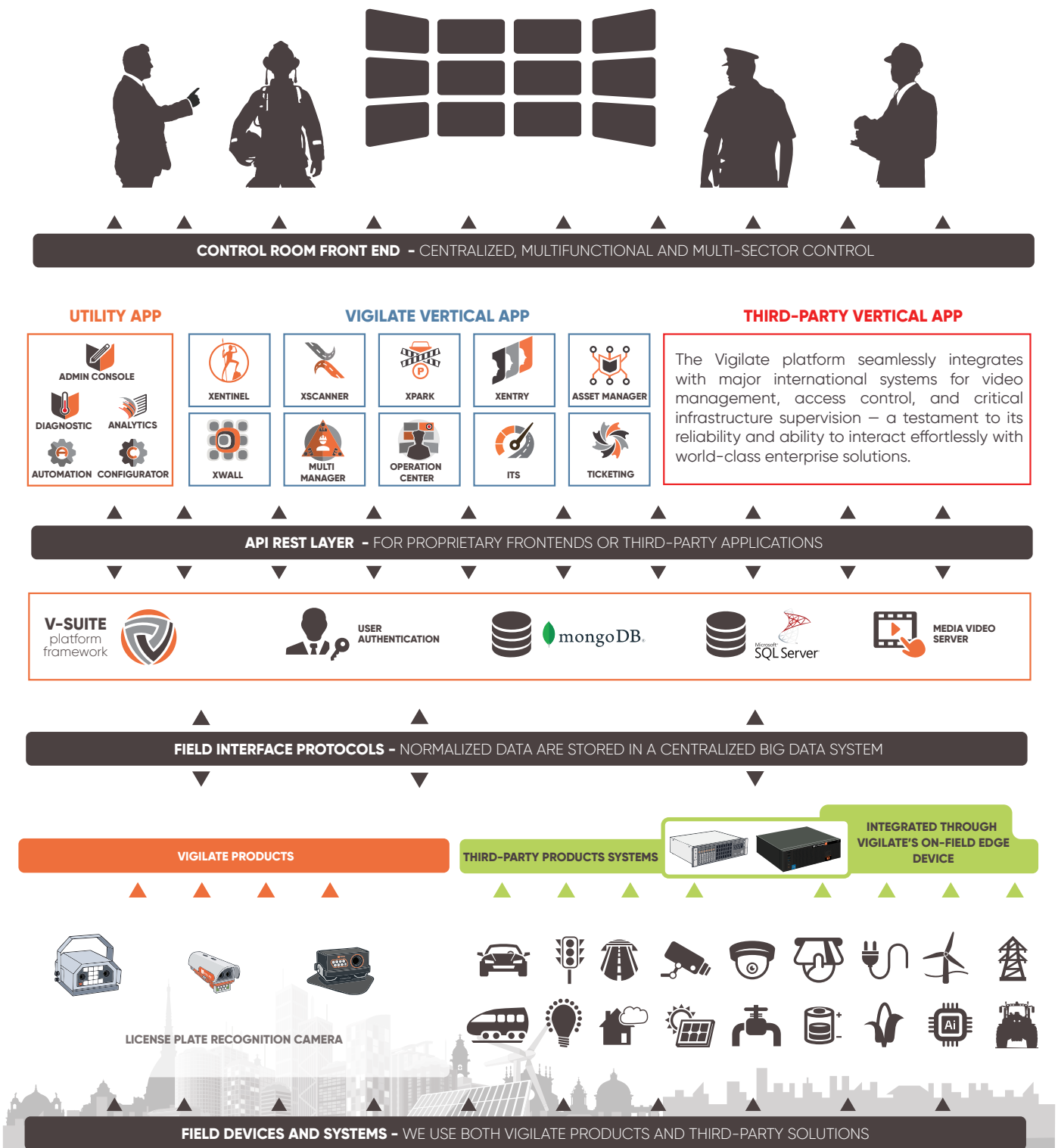
This diagram illustrates the architecture of Vigilate's software and hardware ecosystem, highlighting the interoperability between devices, software services, vertical application modules, and third-party solutions. Here's a detailed analysis:

The suite in the Control Rooms

The Vigilate platform is the operational core of control rooms, where business operators, law enforcement agencies, and emergency services such as fire departments manage security, flows, and alarms in real time.

Through a single interface, users can monitor events,

receive intelligent notifications, coordinate interventions, and access historical data for analysis and investigations. The suite transforms complex information into quick decisions and concrete actions, enhancing security, operational continuity, and response speed.



TECHNOLOGIES

The most innovative and effective technologies are at the heart of our mission and are employed to create products and systems that are efficient, competitive, and future-oriented.

Our products are built around the concept of distributed intelligence, each designed with a

specific, complete, and reliable function. This approach enables us to develop **distributed, scalable technological architectures** that can be easily integrated into remote-control environments, web-based technologies, and cloud-computing solutions. To support this vision, our technological framework is organised into three dedicated areas.

Product & Embedded Division:

responsible for the development of hardware products and related embedded technologies, integrating embedded software and embedded AI.

Platform Division:

dedicated to the development of web-based and mobile applications, managing the entire backend infrastructure built on microservices and non-relational databases.

AI & Innovation:

entirely focused on new technologies with AI Agents – a frontier that opens unprecedented scenarios of automation, intelligent interaction, and advanced services for our clients.

After Sales

The customer is at the heart of Vigilate's business model, demonstrated by our commitment to strong relationships, high loyalty, and rapid response to evolving needs. **After-sales support** is a cornerstone of our offering: we accompany customers throughout the entire product lifecycle, from configuration to advanced support.

A dedicated team manages technical assistance, training, and software updates, ensuring efficiency and full utilisation of the systems.



Smart Partner

Vigilate is the ideal partner for integrating advanced technologies in security, traffic management, and smart mobility in a simple and reliable way.

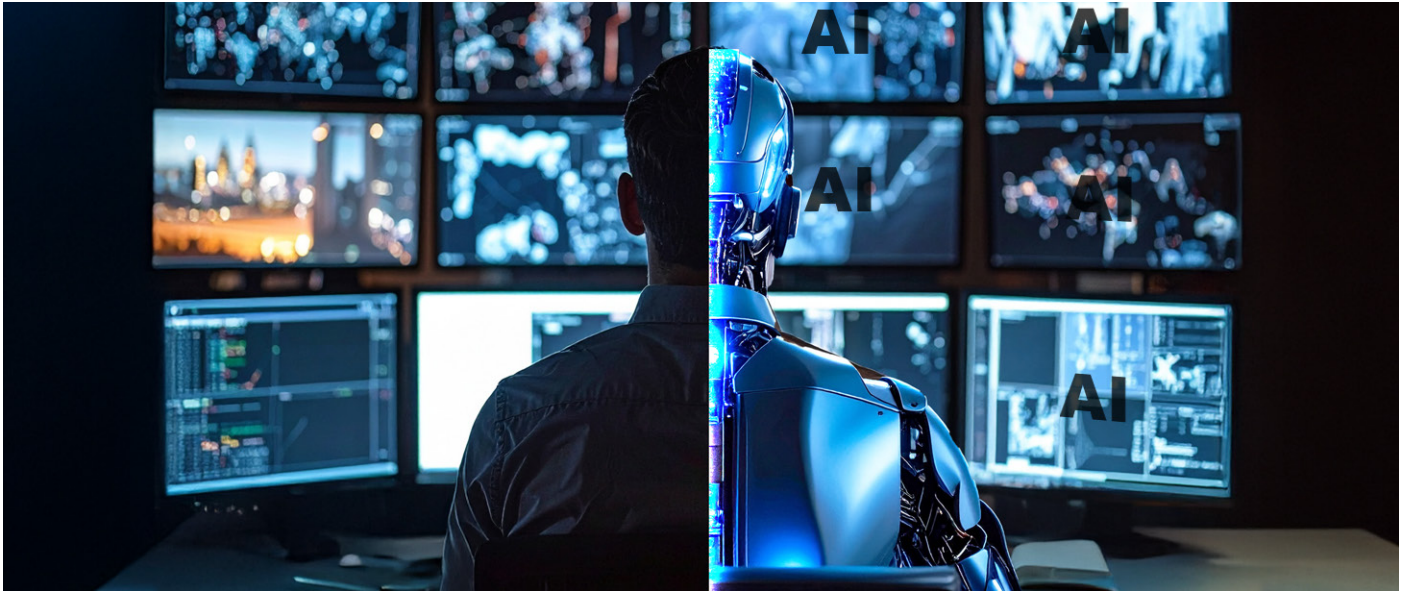
One division develops web and mobile platforms, microservices-based backends, and data-management systems, while a new business unit explores the potential of AI Agents for intelligent automation.

The broad range of products, combined with strong post-sales support, enables Vigilate to work alongside customers and integrators in creating distributed, scalable, and sustainable ecosystems – becoming a future-oriented smart partner.

VIGILATE AI: THE NEW GENERATION OF SECURITY

Vigilate is evolving its positioning with an AI-first approach, introducing a new paradigm in which artificial intelligence is no longer an accessory component, but the core of system management and control-room operations.

This new vision takes shape in a platform of AI agents and AI operators capable of supporting, assisting, and in some cases even replacing activities that until now were entirely entrusted to human personnel.



AI Operators in the Control Room

AI operators represent the new interface between technology and operational management. They become the bridge connecting systems and daily operations. They analyse video streams and events from different systems in real time, filter out false alarms, and automatically trigger the required procedures. **This allows human personnel to intervene only when truly necessary, delivering a dual benefit: reduced staff costs and a faster, more accurate, and more efficient service.**

Next-Generation Intelligent Video Analytics

The use of algorithms based on neural networks and advanced vision models makes it possible to go beyond traditional video-analytics logic.

This approach significantly increases system reliability and contributes to proactive event prevention.

Fast Integration and Interoperability

The Vigilate AI platform is designed to ensure smooth integration with existing devices and protocols. Third-party systems can be interfaced quickly and securely.

Reduction of False Alarms

Vigilate's multi-agent architecture integrates data from video surveillance, intrusion detection systems, access control, perimeter sensors, and building-management components.

The intelligent correlation of events makes it possible to distinguish between false alarms and actual threats, ensuring greater decision reliability while reducing wasted resources and response times.

Long-Term Vision

The introduction of AI agents in control rooms marks the beginning of a path that will establish Vigilate as a benchmark in the Security, Traffic, and Building Management sectors.

Our roadmap includes the development of increasingly autonomous, predictive, and adaptive solutions, capable of providing operators with objective, repeatable decision support that complies with international safety standards.

KEY FACTS & FIGURES

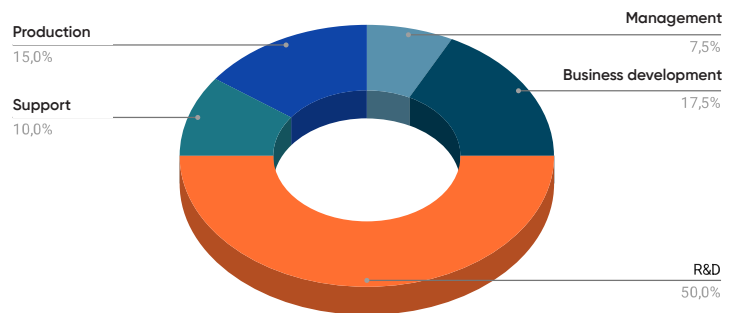
€5,400,000 in annual revenue (12% yearly growth)

More than 10,000 cameras installed nationwide

Over 40 highly qualified professionals

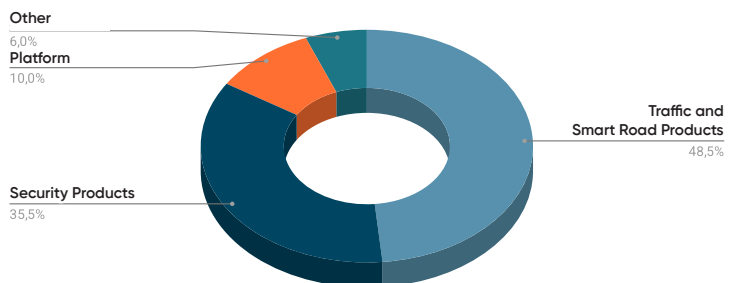
Company Structure

Vigilate's organisation is built on a balance of technological expertise, research and development, production, and commercial operations. At its core is a multidisciplinary team that brings together hardware engineering, embedded software, digital platforms, and emerging AI technologies. This structure enables us to maintain a flexible and innovative approach, capable of managing complex projects while ensuring continuity from concept to implementation and customer support.



Revenue by Market Segment

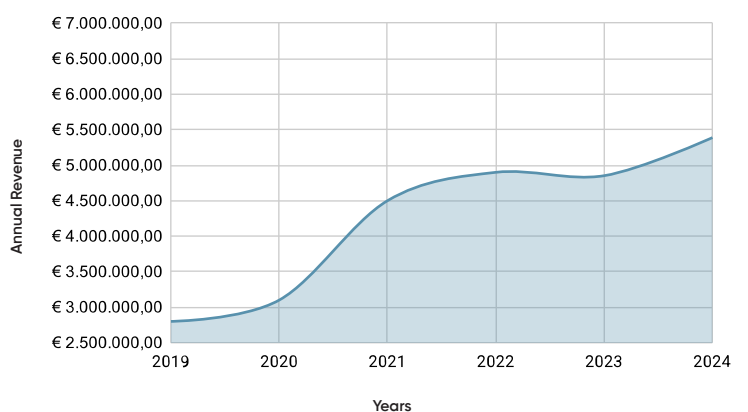
Our revenue reflects the diversification of our business areas: the traffic sector represents the historical core of our activity, while security and parking solutions show steady growth, driven also by innovations such as free-flow barrierless systems and the XPARK software. At the same time, integration and platform projects contribute significantly, demonstrating Vigilate's ability to create value across multiple markets simultaneously.



Revenue Trend

The revenue trend highlights a path of steady and sustained growth. In recent years, international expansion and continuous product innovation have strengthened our competitive position, with stable increases across both established and emerging markets.

The solidity of these results confirms the effectiveness of the strategic choices made and supports our long-term vision, focused on consolidating our presence in Europe and opening new opportunities in global markets.



Vigilate is a tech company that develops devices and software platforms dedicated to security, traffic management, and the new frontiers of Smart Cities and Smart Buildings.

Certifications

EN ISO 9001 :2015
ISO/IEC 27001:2022
ISO/IEC 27017:2015
ISO/IEC 27018:2019
ISDP©10003:2020 (Traffic products)
ACN



Vigilate S.r.l.

Registered and Operational
Headquarters:
Via Napoleonica, 6,
25086 Rezzato BS Italy

Partita IVA: IT01598660056
Tel: +39.0308081000
Pec: vigilatesrl@pec.it
Codice SDI: W7YVJK9

www.vigilatevision.com

